

Ambienti — *Roma,  
Helsinki, Parigi,  
Singapore, Dubai,  
New York, Shanghai,  
Barcellona, Oslo,  
Seoul, Amsterdam,  
Toronto, San Paolo,  
San Francisco.*

**FOSCARINI**

## Ambienti

—  
Progettare significa scegliere, e scegliere una lampada significa mettere in scena la giusta luce. Le lampade Foscarini sono al servizio di chi progetta, per aiutarlo a tradurre idee di luce in spazi “illuminati”.

—  
*Designing means choosing, and choosing a lamp means staging the right light. Foscarini lamps are ready to help designers translate ideas of light into “enlightened” spaces.*

Indice dei luoghi — *Places index*

Hotels — <i>Hotels</i>	Bar e ristoranti — <i>Bar and restaurants</i>	Spazi commerciali — <i>Retail</i>	
021 Fairmont Pacific Rim Hotel, Vancouver, Canada	008 - 009 Taizu Restaurant, Tel Aviv, Israele	019 Pringle of Scotland Store, Shanghai, China	125 Office Matmut Assurances, Rouen, France
026 - 027 Hotel Intercontinental Davos, Davos Dorf, Switzerland	018 Maze Restaurant, Melbourne, Australia	025 Talchà Shop, São Paulo, Brazil	167 Business building outdoor, Antwerp, Belgium
029 Hotel Hilton South Wharf, Melbourne, Australia	024 Le Bombarde Restaurant, Venice, Arsenale, Italy	034 Food Shop Dinzler, Ischenberg, Germany	200 Uni Flair Spa office, reception, Padua, Italy
030 W Retreat & Spa, Vieques Island, USA	031 Plantage cafe & restaurant, Amsterdam, NL	078 - 079 Megion group, Business Center Galleon, Voronezh, Russia	206 Conference room, Sidney, Australia
040 - 041 Hotel Holiday Inn Paris Gare de l'Est, Paris, France	035 Q Music Restaurant, Amsterdam, NL	081 Serli store, Trieste, Italy	Abitazioni — <i>Private houses</i>
049 Hotel Adagio, Moscow, Russia	038 Kokoro Restaurant, Rovigo, Italy	121 Showroom, A Coruña, Spain	028 Private house, Seaside Villa, Izmir, Turkey
052, 067 Hotel Mandarin Oriental, Barcelona, Spain	039 Art Restaurant, Arte Fiera Art First, Bologna, Italy	126 - 127 Minotti Showroom, Shanghai, China	046 - 047 Ipês House, São Paulo, Brazil
054 - 055 Al Khan Resort, Sharjah, UAE	062 Restaurant Jumeirah at Etihad Towers Rosewater, Abu Dhabi, UAE	149, 172 Showroom Seoul, Korea	071 Curved House, Springfield, Missouri, USA
056 Gran Hotel Havana, Barcelona, Spain	064 - 065 Tea Room, Paris, France	156 Showroom MVM, Luzern, Switzerland	075 House, Laguna Beach, California, USA
063 Hotel La Monnaie Art & Spa, La Rochelle, France	068 Garibaldi Italian Restaurant and Bar, Singapore	157 Ottica Ximenes, Barcelona, Spain	080 Butterfly House, San Francisco, USA
066 Motel One, Lounge area, Dresden, Germany	086, 094 Restaurant Eisfeld, Luzern, Switzerland	176 Cesar - Flagship store, Milan, Italy	087 A House, Sofia, Bulgaria
069 The Park Hotel, Bangalore, India	090, 092 Restaurant Le Notre Paris, Amman, Jordan	182 Showroom, Seoul, Korea	105 P House, São Paulo, Brazil
070 Hipotels Barrosa Palace & Spa, Cádiz, Spain	098 - 099 Gaijin Restaurant, Helsinki, Finland	205 Carroll Store, Paris, France	117 Loft, Chelsea NY, USA
082-083 Hotel Hipotels Said, Mallorca, Spain	100, 104 Bar Decumanus Cafè, Firenze, Italy		144 Private house, Duesseldorf, Germany
091 Big Box hotel, Kempten, Germany	101 Probka Restaurant, Moscow, Russia	Musei e centri culturali — <i>Museums and cultural spaces</i>	158 Private house, Udine, Italy
122 Stairwell, Hotel Ohla, Barcelona, Spain	102 - 103 Pier Zero bar, Helsinki airport, Finland	022 - 023 International Red Cross and Red Crescent Museum, Geneva, Switzerland	168 Private house stairwell, New York, USA
123 Hotel Le Val Thorens, Val Thorens, France	119 Restaurant Le Bombarde Arsenale, Venice, Italy	048 Lounge, Bookshop at Arsenale, Venice, Italy	169 Transformation of an apartment in Frankfurt, Germany
143 Hotel Christopher's, Londra, UK	130 - 139 Topolopompo Restaurant, Tel Aviv, Israel	053 The Pavilion, DOWNTOWN Dubai, Dubai, UAE	187 Private house, Milan, Italy
146 - 147 Delta Hotel & Resort, Toronto, Canada	152 Sutton Club, Barcelona, Spain	108 - 115 Museo Poldi Pezzoli, Terrazza Pollaiolo, Caffetteria, Milan, Italy	Installazioni — <i>Installations</i>
148 Hotel Okko, Nantes, France	153 Restaurant Le Bombarde Arsenale, Venice, Italy	196 Installation at Museum fur Angewandte Kunst, Frankfurt, Germany	036 - 037 Cesar installation at Salone del Mobile, Milan, Italy
178 - 179 Hotel Ininside New York NoMad, NY, USA	154 - 155 Restaurant F12 Stockholm, Sweden	Uffici — <i>Offices</i>	042 Installation, Florence, Italy
183, 204 Hotel Nira Montana, La Thuile, Aosta, Italy	164 - 165 Bar, La Biennale, Arsenale, Venice, Italy	020 Pinnacle Tower, Amsterdam, NL	043 Installation, CDW, London, UK
202 Hotel Hermitage, Luzern, Switzerland	166 Restaurant Le Bombarde Arsenale, Venice, Italy	050 - 051 A W Experience showroom, São Paulo, Brazil	077 Installation, Biennale Bookshop at Arsenale, Venice, Italy
	174 - 175 A Riccione Bistrot, Milan, Italy	057, 074 CBC HQ, Guatemala	140 - 141 Installation, Milan, Italy
	190 Restaurant, Berlin, Germany	058 - 059 BDO e CTAC HQ, 's Hertogenbosch, NL	142 Installation, London, UK
	193 Restaurant Cascina Langa, Alba, Italy	093, 196 - 197 Office Lobby Park 80 West, Saddle Brook, NJ, USA	145 Installation, Biennale Bookshop at Arsenale, Venice, Italy
	194 - 195 Restaurant Don Café, Flughafen Wien Schwechat, Austria	095 Shaw Centre Singapore	162 - 163 Outdoor installation, La Biennale, Arsenale, Venice, Italy
	197 Four Seasons Restaurant, Duesseldorf, Germany	076 HP Norge office, Oslo, Norway	173, 177 Installation, Koln, Germany
	203 Italian Bar La Farfalla, Belgium	088 - 089 Rabobank Office, NL	184 - 185 Installation, Stockholm, Sweden
	207 Da Guido Restaurant, Agenzia di Pollenzo, Cuneo, Italy	116 Mr.Wash, Düsseldorf, Germany	186 Installation, The Armory Show, NY, USA
		118 - 120 Entrance hall Holman Fenwick Willan, London City, UK	191 Outdoor installation, La Biennale, Giardini, Venice, Italy
		124 Groupe Ortec HQ, Marseille, France	192 Installation, Milan, Italy
			201 Installation, Biennale Bookshop at Arsenale, Venice, Italy

Indice dei prodotti — *Product index*

006 Allegro	106 Gregg
+ Allegretto	128 Plass
032 Le Soleil	150 Uto
044 Twiggy	160 Havana
060 Caboché	170 Spokes
072 Big Bang	180 Rituals
084 Tress	188 Miscellaneous
096 Aplomb	

Info tecniche — *Technical info*

Lampada a sospensione — *Suspension lamp*

## Allegro + Allegretto

Atelier Oi, 2007

La luce è danza e musica con Allegro e Allegretto, lampade nate dalla magia del suono che diffondono lieve dalle loro aste metalliche se sfiorate. Possono esibirsi in un assolo, e ognuna sostenere la scena, o moltiplicarsi in serie, ed è un'orchestra di linee leggere, o comporsi liberamente nel loro repertorio di forme, colori e dimensioni. Comunque sia, animano l'ambiente di luce scintillante, proiezioni filiformi, vere e proprie coreografie nello spazio.

*Light becomes dance and music with Allegro and Allegretto, lamps generated by the magic of sound that softly spreads from their rods when touched. They take the stage as soloists or ensembles, in a symphony of slender lines, or freely arranged in their range of forms, colours and sizes. In any solution, they bring spaces alive with their sparkling glow and thread-like shadows, in captivating spatial choreographies.*



Allegro + Allegretto

Restaurant,  
*Tel Aviv, Israel*



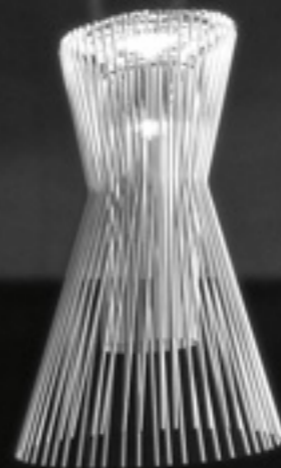
Ambienti

009



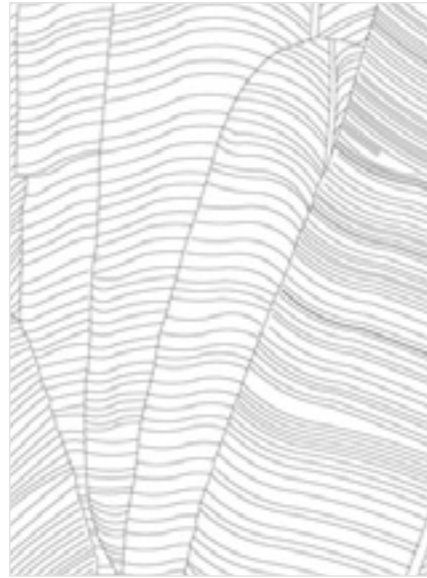
Allegro + Allegretto

011

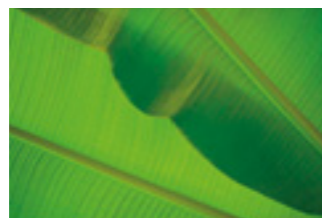


Restaurant  
Tel Aviv, Israel

Studio analitico — Case study



Banana leaf texture



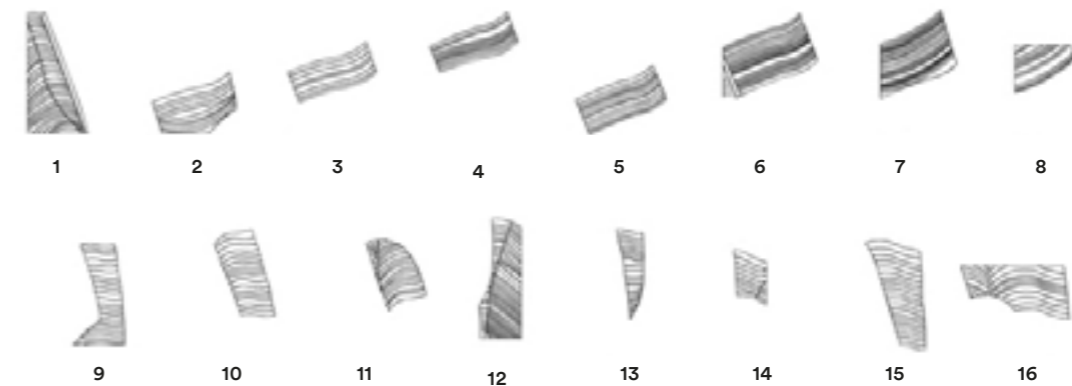
Banana leaf inspiration



# Taizu Restaurant

Tel Aviv → Israel

Design: Pitsou Kedem & Baranowitz – Amit Design Studio  
 Design team architects: Pitsou Kedem, Hila Sela, Irene Goldberg,  
 Sigal Baranowitz, Gali Amit  
 Lighting design: Orly Avron Alkabes  
 Photography: Amit Geron



Un magistrale accostamento quello immaginato per il concept restaurant Taizu, a Tel Aviv, firmato dall'architetto Pitsou Kedem e condotto dallo chef Yuval Ben Neria in una personale e raffinata interpretazione dello street food del Sudest asiatico. Qui Allegro accorda i suoi registri con un Leitmotiv grafico – venature stilizzate di foglie di banana – che “avvolge” i commensali e li nutre anche scenograficamente delle tradizioni culinarie cui il luogo è dedicato.

A masterful combination, envisioned for the Taizu concept restaurant in Tel Aviv, designed by the architect Pitsou Kedem and run by the chef Yuval Ben Neria with a refined personal interpretation of Southeast Asian street food. Here Allegro gets in tune with a graphic Leitmotiv – stylized banana leaf veins – that “wraps” diners to also offer visual nourishment, referencing the culinary traditions behind the venue.



**Taizu Restaurant**

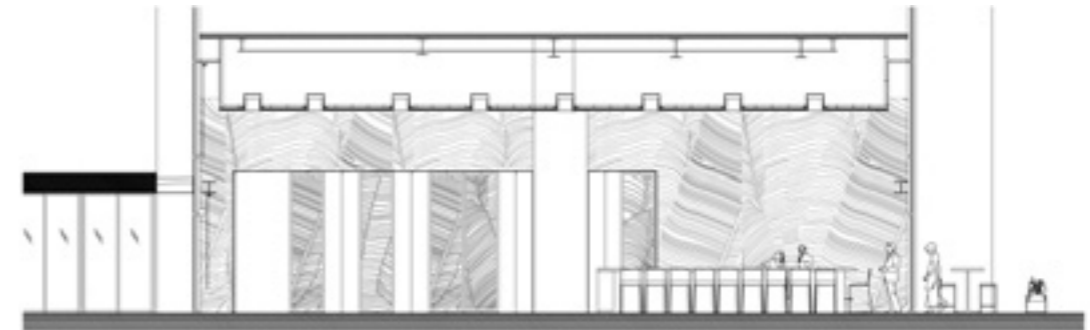
Tel Aviv → Israel



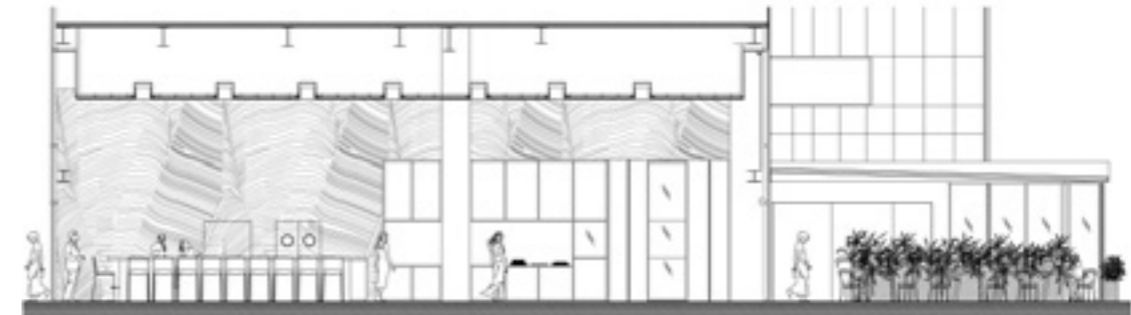
Plan ↗

- |                           |                  |                   |
|---------------------------|------------------|-------------------|
| 01 — Entrance             | 04 — Dining hall | 07 — Open kitchen |
| 02 — Outdoor seating area | 05 — Bar         | 08 — Restrooms    |
| 03 — Lounge               | 06 — Chef room   | 09 — Kitchen      |

**Studio analitico — Case study**



Section AA



Section BB

*Taizu si compone di diversi ambienti e tutti parlano di Asia: dalla lounge area ispirata alla convivialità istantanea del cibo di strada, alla chef room dalle pareti in blocchi di bamboo, alla sala principale, baricentro più formale ma bilanciato dalla presenza dinamica del bar e dell'open kitchen che vi si affaccia, delimitata da alti pannelli pivotanti attraverso i quali Allegro riverbera col resto degli spazi.*

*Taizu is composed of different spaces, all of which speak of Asia: from the lounge area focused on the instant conviviality of street food, to the chef room with walls in white bamboo blocks, and the main dining room, a more formal centre of gravity, balanced by the dynamic bar and adjacent open kitchen bordered by tall pivoting panels, through which Allegro reverberates with the rest of the spaces.*

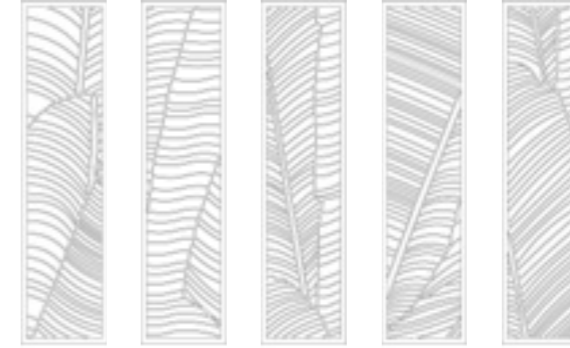
Studio analitico — Case study



Banana pattern  
wood pivots

**Taizu Restaurant**

Tel Aviv → Israel



Banana pattern  
wood pivots



*Allegro è capace d'inusitati accoppiamenti – resi ancor più versatili dalla collezione “in scala minore” Allegretto – e può librarsi sullo sfondo neutro di un ambiente minimale, in un contrappunto “assai ritmico e vivace”, o entrare in risonanza (non c'è parola più opportuna) con spazi, come questi, più inclini alle finezze della decorazione: comunque arricchendoli di una “musicalità” che renderebbe un po' magico qualsiasi ambiente contract e non solo.*

*Allegro is ready for unusual combinations – made even more versatile by the Allegretto collection “in a minor key” – and takes flight against the neutral backdrop of a minimal setting, in a rhythmical and “vivace” counterpoint, or enters into resonance (no term could be more apt) with spaces like these, with a greater focus on decorative refinement: in any case, it enhances rooms with its musical character, making contract settings and all other contexts a bit more magical.*

Allegro + Allegretto



019

← Restaurant  
*Melbourne, Australia*

Retail  
*Shanghai, China*



# Allegro + Allegretto

Office  
*Amsterdam, The Netherlands*

Hotel →  
*Vancouver, Canada*



Ambienti

021



C H A C U N  
EST RESPONSABLE  
DE TOUT DEVANT TOUS  
DOSTOEVSKI





← Restaurant  
*Venice, Italy*

Retail  
*São Paulo, Brazil*





Restaurant  
Davos, Switzerland



Private house  
Izmir, Turkey

Hotel →  
Melbourne, Australia





Allegro + Allegretto



031

← Hotel  
*Vieques Island, USA*

Restaurant  
*Amsterdam, The Netherlands*



Lampada a sospensione — *Suspension lamp*

## Le Soleil

Vicente Garcia Jimenez, 2009

Un astro luminoso avvolto da bande schermanti che tracciano orbite irregolarmente sovrapposte e dosano la luce: diretta verso il basso a illuminare decisa le superfici, riflessa lungo i bordi a diffondersi morbida nell'ambiente. È un corpo celeste – o meglio bianco, rosso e acquamarina – che solitario attrae come l'epicentro di un sistema solare, e moltiplicato in costellazioni o in ordinati allineamenti crea secondo il colore spazi eterei e raffinati, intensi, giocosi, comunque sorprendenti.

*A luminous star wrapped by sheltering strips that form irregular overlapping orbits to control the flow of light: directly downward, for vivid lighting of surfaces, and reflected along the edges to spread softly in space. A heavenly body – in white, red and aquamarine – with the magnetism of the solitary centre of a solar system, or can be multiplied in constellations or orderly alignments, creating ethereal and refined, intense and playful, always surprising spaces, depending on the colour.*

Le Soleil

Retail  
*Ischenberg, Germany*

Restaurant →  
*Amsterdam, The Netherlands*



Ambienti

035





Le Soleil



039

← Restaurant  
Rovigo, Italy

Restaurant  
Bologna, Italy









Lampada da terra, sospensione e soffitto —  
*Floor, suspension and ceiling lamp*

## Twiggy

Marc Sadler, 2006

Una compagnia garbata e colta, intrisa di sapere e di ricerca che con naturalezza non ostenta, diretta e puntuale come la luce che emana mentre curiosamente ci osserva, elegantemente ricurva, da dietro le spalle. Anche da sola, Twiggy può risolvere uno spazio, che vuole generoso, regalando humour e animandolo con la sua presenza esile e flessibile, ma importante, di un'elegante sottigliezza di stile. Insieme ad altre può essere una festa, anche di colori.

*A tactful, erudite companion, versed in knowledge and research without displaying it, direct and punctual like the light she emits while curiously observing us, elegantly poised behind our backs. Even on her own, Twiggy can resolve a space, hopefully a generous one, bringing good cheer and vivacity with her slender, flexible yet forceful presence, with an elegant subtlety of style. Together with others, it's a party – also of colours.*





Private house  
São Paulo, Brazil

Twiggy



049



← Lounge  
Venice, Italy

Hotel  
Moscow, Russia

Twiggy

051



Office  
São Paulo, Brazil

Twiggy



Hotel  
Barcelona, Spain

Museum →  
Dubai, UAE

Ambienti

053





Twiggy



057

← Hotel  
*Barcelona, Spain*

Office  
*Guatemala*





Office  
s'Hertogenbosch, The Netherlands

Lampada da sospensione, parete e soffitto —  
*Suspension, wall and ceiling lamp*

## Caboche

Patricia Urquiola con Eliana Gerotto, 2005

Caboche infonde una sofisticata ed elegante effervescenza allo spazio, moltiplicandolo in un caleidoscopio di luci e immagini riflesse nelle sue sfere trasparenti o giallo oro. Sotto la luce diffusa da uno schermo di vetro soffiato satinato bianco, queste ne fanno un oggetto prezioso che rimanda a fasti classici, ma attualizzato nella forma e nelle proporzioni da renderlo estremamente versatile, un accessorio d'epoca fuori scala, un "gioiello" utilizzabile anche con dovuta ironia.

*Caboche brings sophisticated and elegant effervescence to space, multiplying it in a kaleidoscope of lights and images reflected in its transparent or golden yellow spheres. Under the light diffused by a white satin-finish blown glass screen, the spheres make it a precious object that suggests classic splendour, but updated in terms of form and proportions to achieve extreme versatility. An off-scale period piece, a "jewel" that can also be used with appropriate irony.*









Caboche



067

← Hotel  
*Dresden, Germany*

Hotel  
*Barcelona, Spain*





← Restaurant  
Singapore

Hotel  
Bangalore, India

Caboche

Hotel  
Cádiz, Spain

Private house →  
Springfield, Missouri, USA



Ambienti

071



Lampada a sospensione — *Suspension lamp*

## **Big Bang**

Enrico Franzolini con Vicente Garcia Jimenez, 2005

I mille piani di una controllata deflagrazione della forma, la loro apparente casualità, la luminosità diffusa in chiaroscuro e senza abbagli e una luce ben diretta verso il basso su “bersagli” ad hoc, danno a Big Bang un carattere esuberante e insieme capace di eleganti equilibri. In verticale su grandi altezze è uno spettacolo di geometrie, in libere composizioni nello spazio è una nuvola astratta che regala agli ambienti in cui è immersa inaspettati gradi di libertà.

*The thousand plateaus of a controlled explosion of form, their apparent random arrangement, the diffuse chiaroscuro glow, without glare, a light directed downward to particular “targets”, give Big Bang an exuberant character that is also capable of achieving an elegant balance. Placed vertically at great heights, it is a geometric spectacle, while in free compositions in space it becomes an abstract cloud that grants unexpected degrees of freedom to spaces.*

Big Bang



075



← Office  
Guatemala

House  
Laguna Beach, CA, USA

Big Bang

Office  
Oslo, Norway

Installation →  
Venice, Italy









Private house  
San Francisco, USA

Retail →  
Trieste, Italy





Lampada a sospensione — *Suspension lamp*

## Tress

Marc Sadler, 2008

Nata da un'appassionata ricerca sui materiali compositi, è un nido di luce fatto di trame e intrecci che sono struttura e decoro insieme, e che producono seducenti giochi luminosi: ombre e bagliori diffusi da maglie di fibra di vetro laccato e luce diretta dalle estremità. Un'intera famiglia di lampade che vivono con versatilità in spazi ampi o raccolti e, anche quando spente, li tessono e li ridisegnano scandendo le diverse aree con piccoli e grandi totem contemporanei.

*The result of intense research on composite materials, a nest of light made of weaves and braids that are both structure and decoration, producing seductive luminous effects: shadows and glows spread by lacquered fiberglass mesh, with direct light at the extremities. An entire family of versatile lamps for large or small spaces. Even when they are off, they bring texture and character to rooms, defining different areas with small and large contemporary totems.*

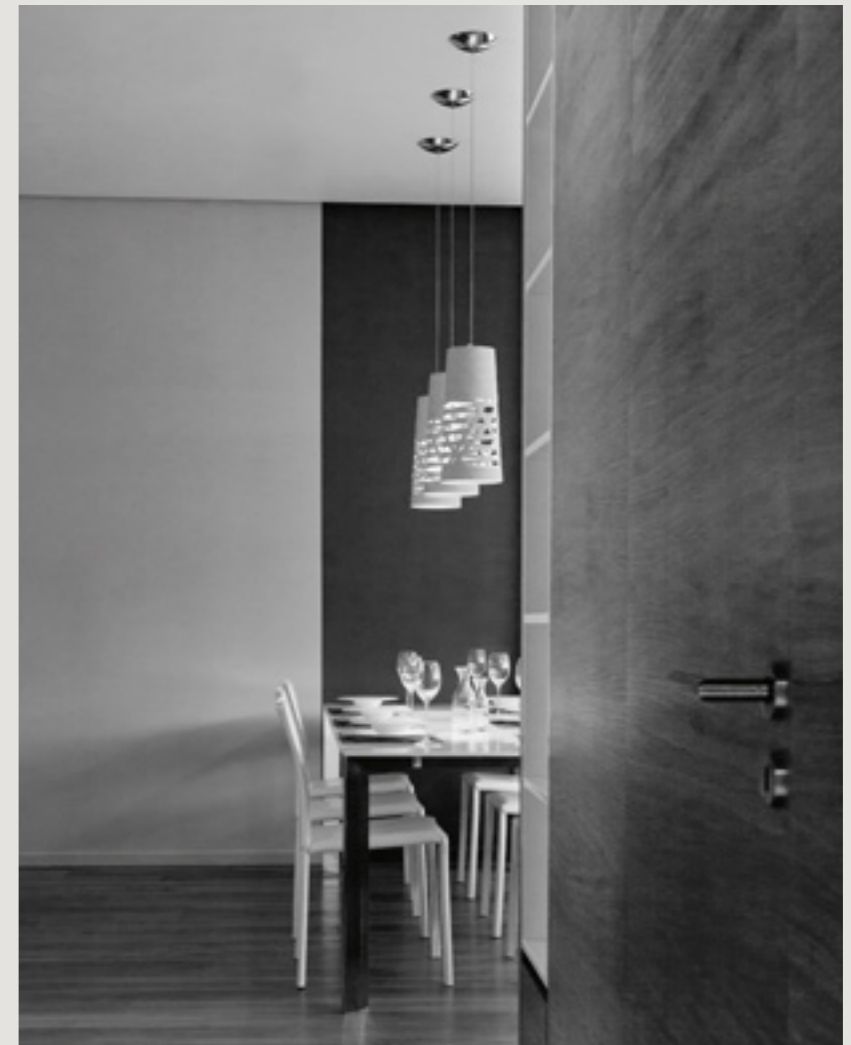
Tress



087

← Restaurant  
*Luzern, Switzerland*

House  
*Sofia, Bulgaria*





Tress



091

← Restaurant  
Ammam, Jordan

Hotel  
Kempten, Germany



Tress

Restaurant  
Amman, Jordan

Office →  
Saddle Brook, New Jersey, USA





Tress

Restaurant  
*Luzern, Switzerland*

Office →  
*Singapore*



Lampada a sospensione — *Suspension lamp*

## Aplomb

Lucidi e Pevere, 2010

Talvolta l'eureka di un progetto passa per una semplice punteggiatura dello spazio, purché condotta con equilibrio e una certa disinvoltura. Come dire: con *aplomb*. E così questa lampada: un filo (a piombo) e un peso, un cono di luce diretta, protetta da una piccola architettura *brut*, fatta di un levigato cemento speciale. Un salto di scala che dà ritmo allo spazio con inserti liberi e puntuali, traducendo linguaggi e materiali inattesi in nuove e leggere arie metropolitane.

*Sometimes the "eureka moment" of a project is triggered by a simple punctuation of space, if it happens with balance, and a certain nonchalance. With aplomb, so to speak. As in this lamp, for example: a cable (a plumb line) and a weight, a cone of direct light, protected by a small work of brut architecture made of special polished cement. A leap of scale that adds rhythm to the space with free, punctual inserts, translating unexpected materials and languages into new, light metropolitan arias.*







← Bar  
*Firenze, Italy*

Restaurant  
*Moscow, Russia*



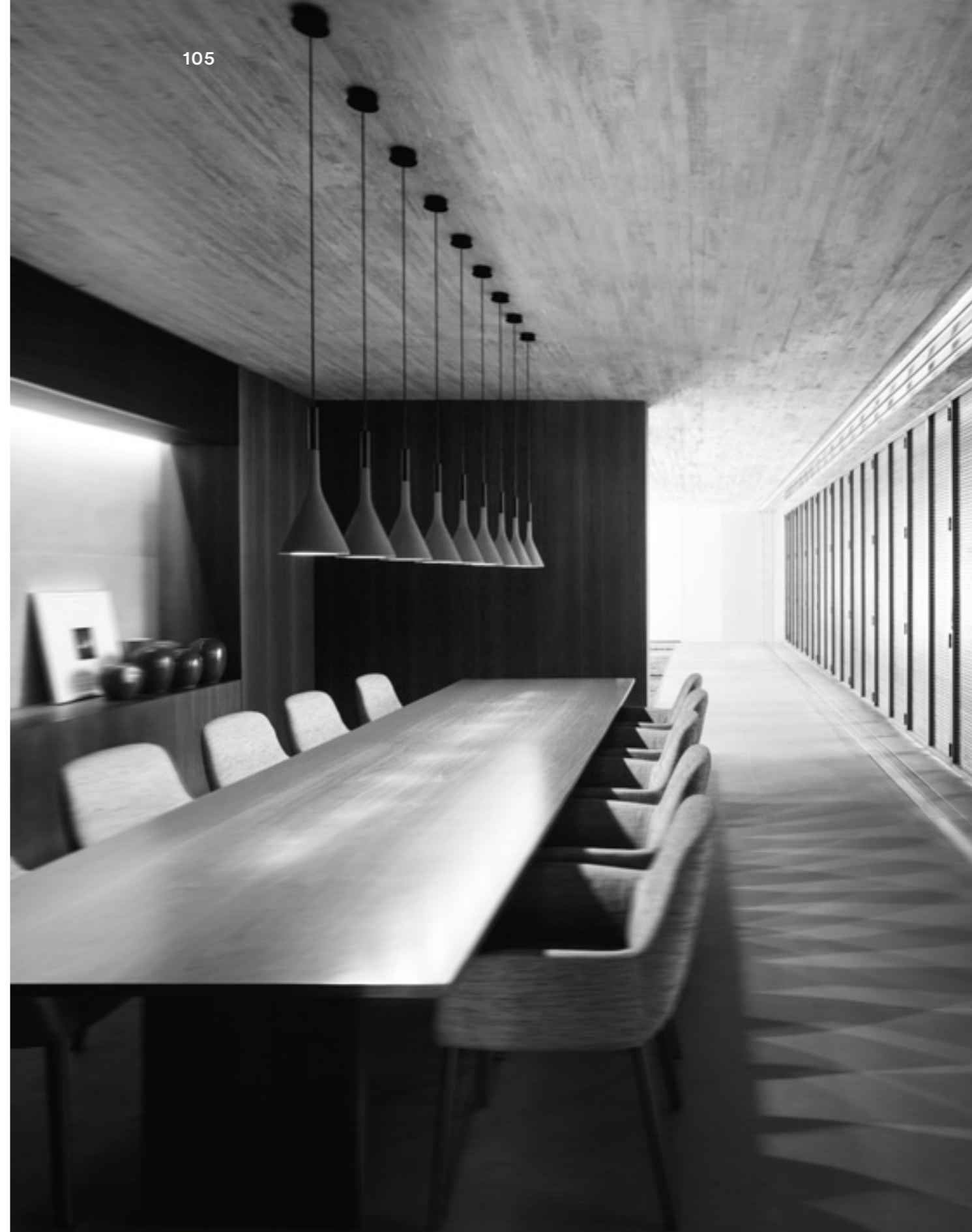


Bar  
Helsinki airport, Finland



Bar  
Florence, Italy

Private house →  
São Paulo, Brazil



Lampada a sospensione, outdoor, terra e parete — *Suspension, outdoor, floor and wall lamp*

## Gregg

Ludovica e Roberto Palomba, 2007

Asimmetrica, dai raccordi eleganti, mutevole col punto di vista, Gregg è un oggetto universale. Gioca con le geometrie ineffabili della natura, col sapere del vetro soffiato, con rimandi alla cultura più alta, ma fugge le catalogazioni, i codici stilistici, il previsto e il predisposto. Sa stare da sola, ma dà il meglio in compagnia, diffondendo la sua luce calda con insiemi enigmatici ma familiari, capaci di dialogo con qualsiasi ambiente: qualsiasi davvero, perché può inserirsi ovunque.

*Asymmetrical, with elegant joints, changing depending on the vantage point, Gregg is a universal object. It plays with the ineffable geometries of nature, the know-how of blown glass, with references to the highest culture, while eluding categories, stylistic codes, predictability. It enjoys independence, but prefers company, spreading its warm light in enigmatic but familiar ensembles, ready for dialogue with any environment: truly any space, because it is at home everywhere.*





Gregg

Museum  
*Milan, Italy*

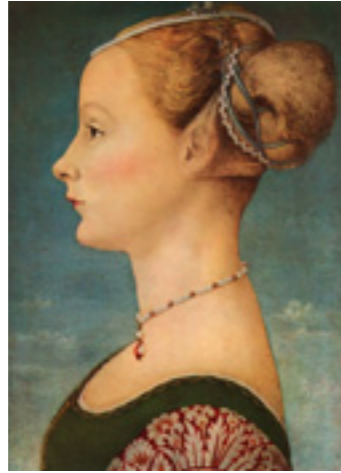


Ambienti

111



## Studio analitico — Case study



*Ritratto  
di giovane dama,  
Antonio del Pollaiuolo  
(1472)*



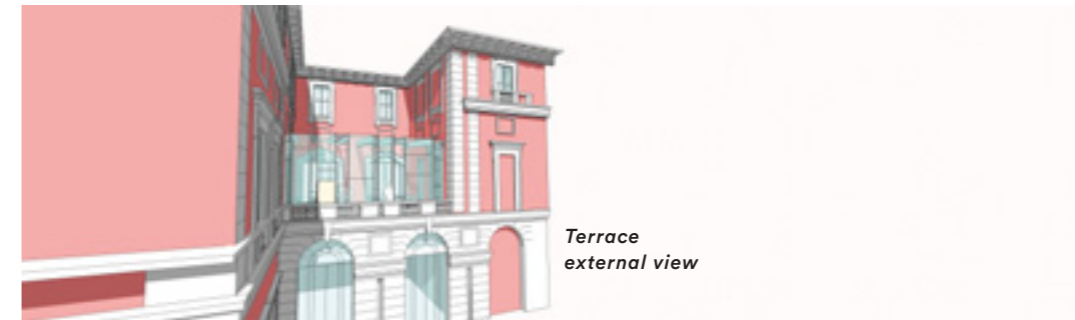
*Terrace  
external view*



## Poldi Pezzoli Museum

Terrazza Pollaiolo, Caffetteria  
Milan → Italy

Project by: Luca Rolla e Alberto Bertini architects  
Project team: Anna Fuselli  
Photography: Luca Rolla e Alberto Bertini (interiors),  
Gianmarco Corradi (outdoor)



*Terrace  
external view*

La Terrazza Pollaiolo risponde a una precisa esigenza del Museo Poldi Pezzoli, che si aggiorna a luogo d'incontro e di confortevole permanenza oltre che di sofisticato sapere. Ma è anche un colto inserimento in una raffinata casa-museo ottocentesca: ovvero, un "salotto", né interno né esterno (o meglio entrambe le cose) che, come un passage, omaggia la modernità storica e la attualizza nel linguaggio e nella tecnologia.

The Pollaiolo Terrace meets a precise need of the Poldi Pezzoli Museum, as a gathering place of leisurely comfort as well as sophisticated knowledge. It is also an erudite insertion in a refined 19th-century house-museum: a "parlour", neither inside or outside (or perhaps both), that like a passage pays tribute to the modernity of history, updating it in terms of language and technology.

**Poldi Pezzoli Museum**

Milan → Italy



Internal view ↗

**Studio analitico — Case study**

Luogo di sosta per il corpo e il pensiero lungo un denso percorso museale, la terrazza conserva col suo involucro vetrato il carattere di spazio aperto. Uno spazio trasparente che si offre a molteplici usi, con colori e materiali discreti, inondato di luce diurna ed esposto al cielo notturno: valore che un altro “cielo stellato” ben sottolinea, una costellazione di lampade Gregg che riflette nelle vetrate raddoppiano abilmente lo spazio, e sospese lo illuminano con scenari mutevoli, giocosi e colti.

*A relaxing place for the body and mind along an intense museum itinerary, with its glass enclosure the terrace conserves the character of open space. A transparent space that lends itself to multiple uses, with discreet colours and materials, flooded with daylight or open to the night sky: a virtue underscored by another “starry sky”, a constellation of Gregg lamps, reflected in the windows, nimbly doubling the space and lighting it, suspended, with mutable, playful, refined scenarios.*



Section 1



Section 2



Section 3

Gregg



117



← Retail  
*Düsseldorf Germany*

Private House  
*New York, USA*

Gregg

Entrance hall  
*London City, UK*

Restaurant →  
*Venice, Italy*



Ambienti

119





← Entrance hall  
*London City, UK*

Office  
*A Coruña, Spain*

Gregg

Hotel  
*Barcelona, Spain*

Hotel →  
*Val Thorens, France*



Ambienti

123



Gregg



125



← Office  
Marseille, France

Office  
France



Gregg

Retail  
*Shanghai, China*



Ambienti

127



Lampada a sospensione — *Suspension lamp*

## Plass

Luca Nichetto, 2011

Omaggio alla tradizione delle perle di vetro muranesi, questo grande sferoide è un salto concettuale, materiale, percettivo che lega memoria e creatività sperimentale. Dallo stampaggio rotazionale del polycarbonato nasce la sua superficie singolare, volutamente “imperfetta”, che vibra di luce dall’interno. Da spenta esalta i suoi colori, da accesa li stempera in una luminosità liquida, quasi lagunare. Predilige spazi ampi, cui sa infondere presenza e leggerezza insieme.

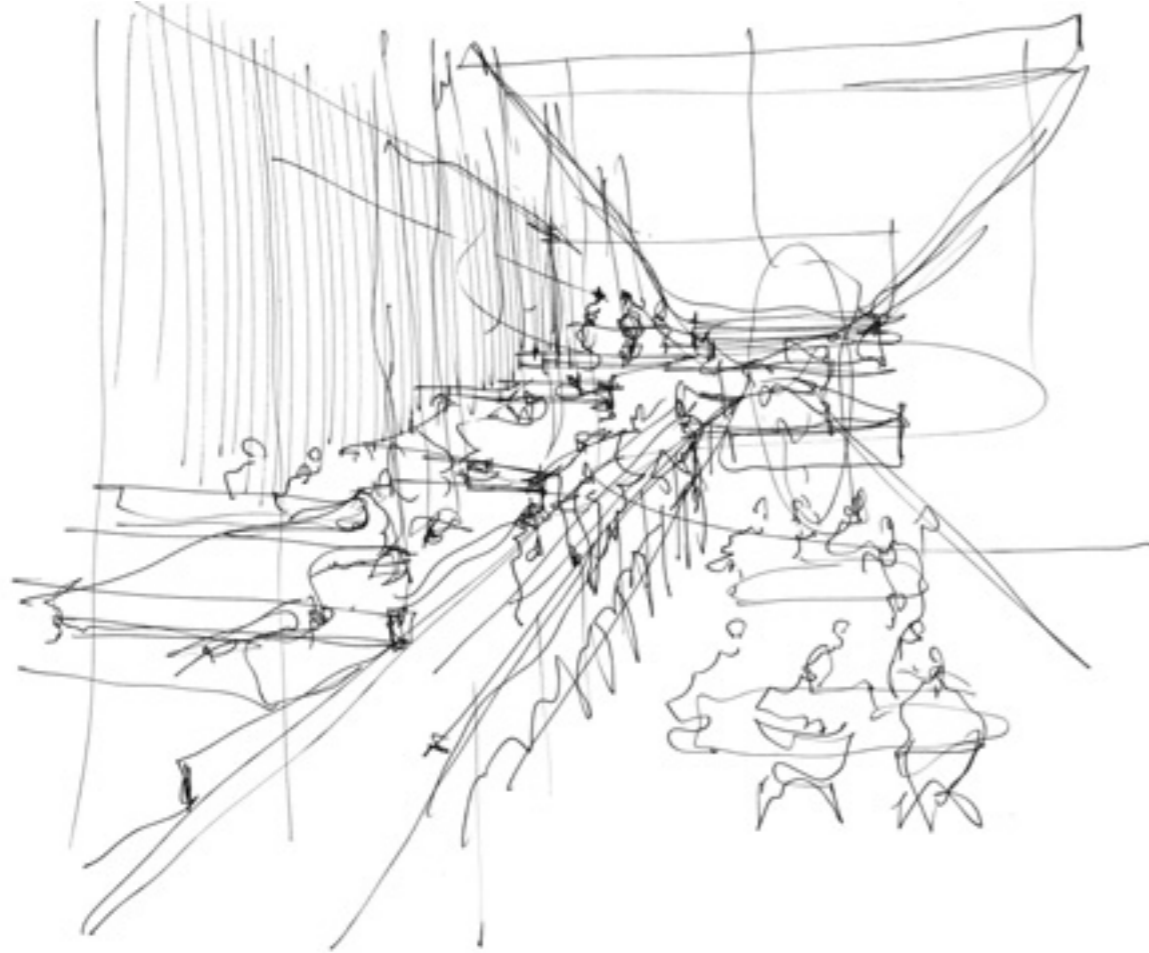
*A tribute to the tradition of glass pearls made in Murano, this large spheroid is a conceptual, material and perceptive leap that links memory and experimental creativity. The rotomoulding of polycarbonate generates its singular, intentionally “imperfect” surface that vibrates with light from the inside. When it is off, its colours gain definition; when it is on, they wane in liquid, almost lagoon-like luminosity. Plass likes ample spaces in which to spread presence and lightness at the same time.*



Restaurant  
*Tel Aviv, Israel*



Studio analitico — Case study

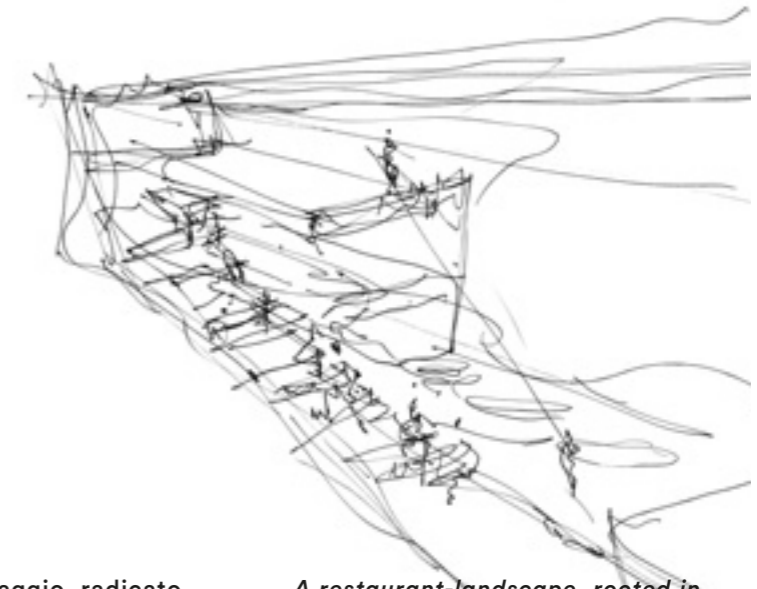


↑ Sketch idea

## Topolopompo Restaurant

Tel Aviv → Israel  
Topolopompo Fire Kitchen

Project by: Baranowitz Kronenberg Architecture, Tel Aviv, Israel  
Client/Manufacturer: Avi Conforti, Yael Arenstein-Uri, Anat Laufer, Tel Aviv, Israel  
Photography: Amit Geron

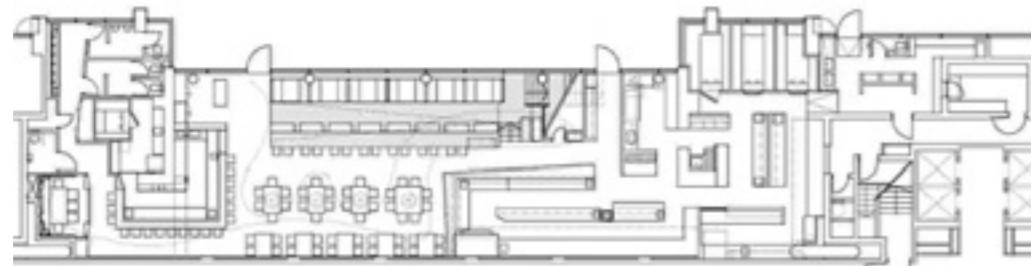
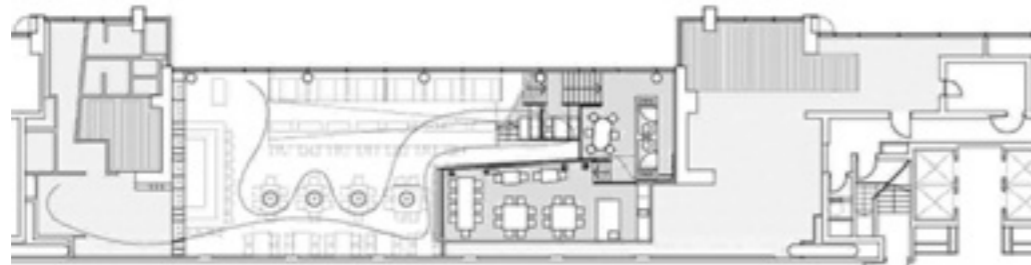
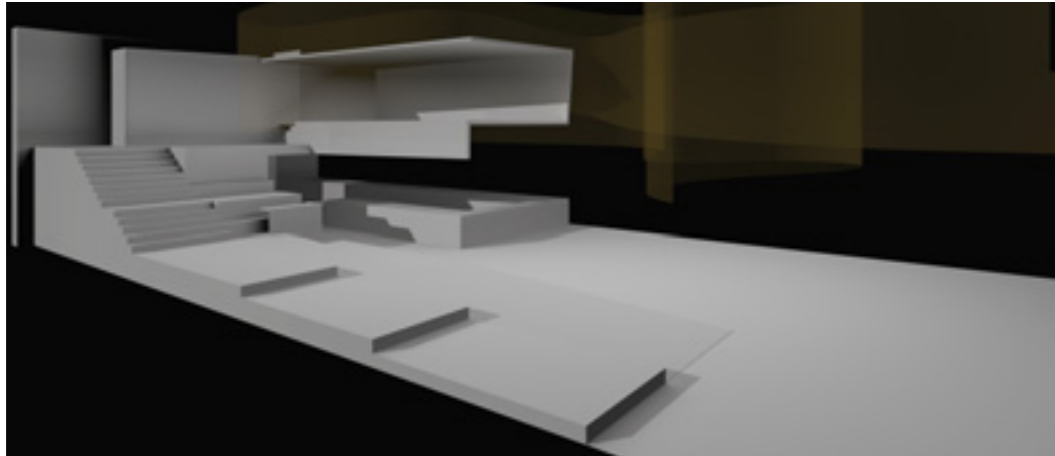


È un ristorante-paesaggio, radicato in simbologie primordiali ma tradotte con una ricca sensibilità contemporanea. Fatto di pietra lavica e legno di bamboo, d'allegorie di mitologici draghi sotto forma di volute tessili avvolgenti, d'invenzioni come una parete di tradizionali recipienti per la cottura al vapore: tutto parla di fuoco, calore ed energia naturale in questo ristorante dallo spazio stratificato.

A restaurant-landscape, rooted in primordial symbolism but translated with lush, contemporary sensibilities. Made of lava and bamboo, allegories of mythical dragons in the form of enveloping textile coils, inventions like a wall of traditional vessels for steam cooking: everything speaks of fire, heat, natural energy, in this restaurant in a stratified space.

Topolopompo Restaurant

Tel Aviv → Israel

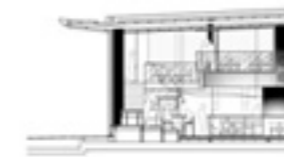


↑ Gallery and main floor plan

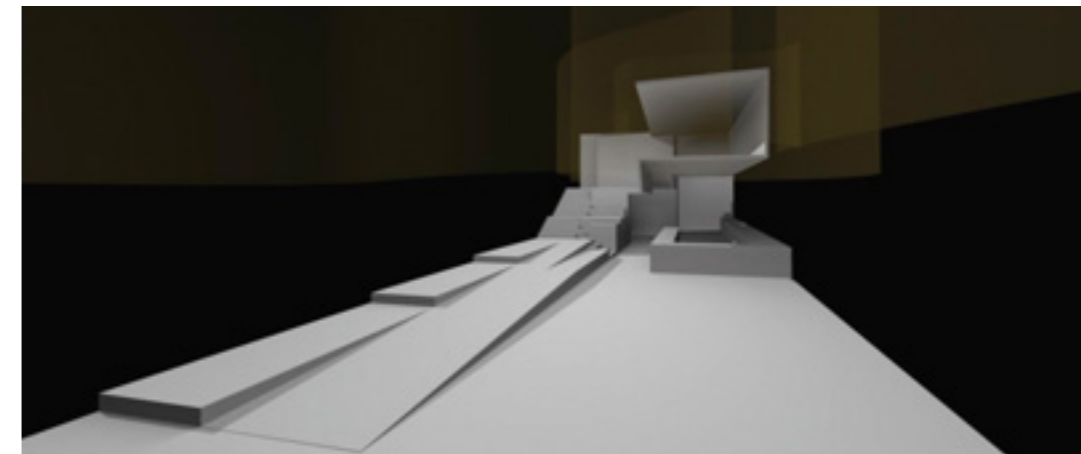
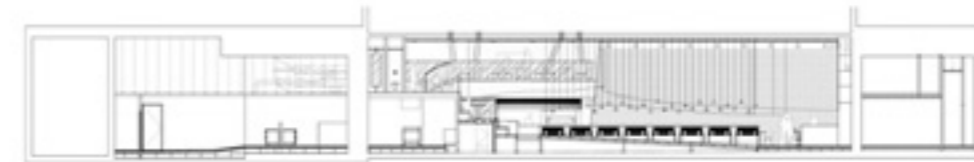
Studio analitico — Case study

Un classico paesaggio orientale è lo scenario cui si ispira il progetto: valli fertili, terrazze a risaia, rilievi e picchi montuosi sono la matrice dello spazio interno, dove le geometrie dei volumi s'intersecano accordandosi con le diverse funzioni. Le sale aperte, una cucina a vista, l'area bar, una lounge si susseguono fluide su pendii e dislivelli, e generano percorsi fisici e visivi e diverse forme di socializzazione tra gli ospiti.

The scenario behind the design is a classic oriental landscape: fertile valleys, terraced rice paddies, hills and mountain peaks form the matrix of the interior, where the geometric volumes intersect, in tune with the various functions. The open dining rooms, the visible kitchen, the bar area and a lounge form a fluid sequence on slopes and staggered levels, generating physical and visual paths, and different forms of socializing among the guests.



← Gallery and main floor plan



## Studio analitico — Case study



↑ Entrance



Bar area →

La luce è cruciale in quest'interno vibrante, richiama magie notturne puntiformi e la delicatezza soffusa delle tradizionali lanterne asiatiche. Così fonti luminose disseminate come "luciole" illuminano un lungo tavolo lineare ben disposto a vivaci convivi, mentre Plass entra elegantemente in scena sui più raccolti tavoli centrali, dando loro un senso di speciale intimità con la luce diretta sui piani, e arricchendo lo spazio di riflessi diffusi e altre trasparenze.

Light is crucial in this vibrant interior, evoking punctiform nocturnal magic, the hazy delicacy of traditional Asian lanterns. Light sources scattered like fireflies brighten a long linear table ready to welcome lively conversations, while Plass makes an elegant entrance over the cosier central tables, granting them a sense of special intimacy with direct light on their surfaces, while enhancing the space with cast reflections and other transparencies.

Topolopompo Restaurant

Tel Aviv → Israel





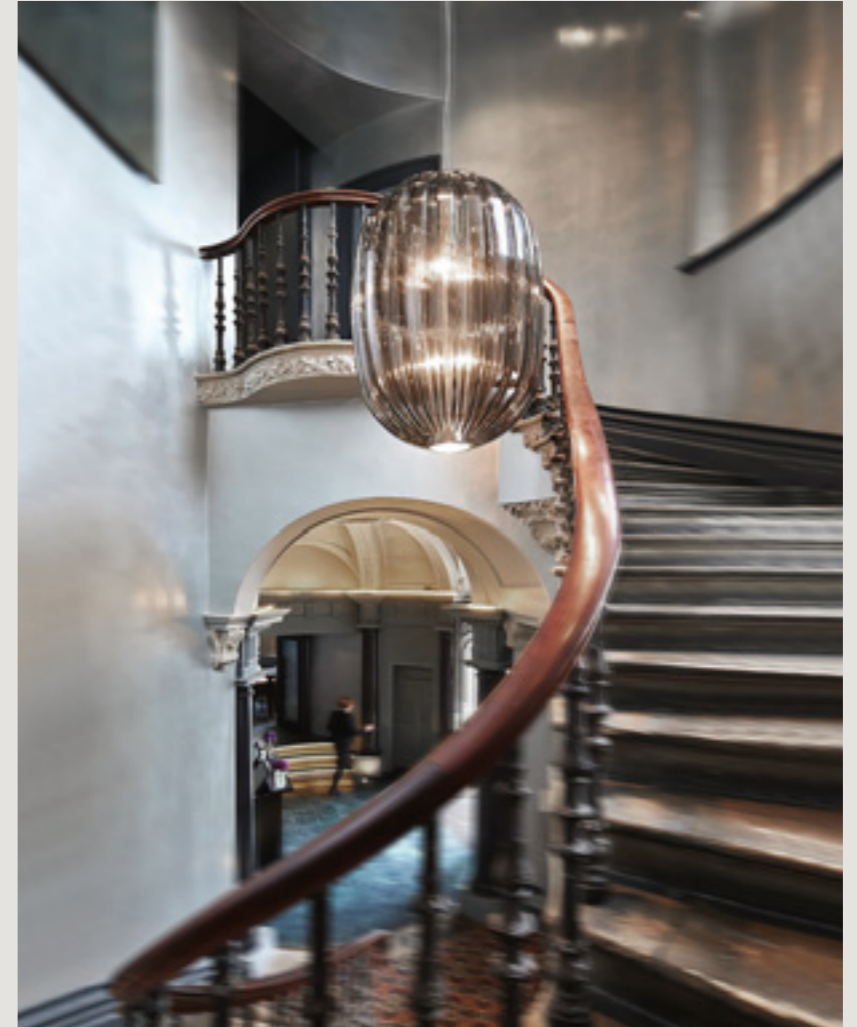
Installation  
Milan, Italy





← Installation  
London, UK

Hotel  
London, UK





Private house  
Duesseldorf, Germany

Installation →  
Venice, Italy

Ambienti





Hotel  
Toronto, Canada

Plass

Hotel  
France

Retail →  
Seoul, Korea



Ambienti

149



Lampada a sospensione — *Suspension lamp*

## Uto

Lagranja Design, 2005

Con Uto la luce si fa gioco: un gioco ubiquo, mobile, trasferibile, colorato, morbido e sempre disponibile alle variazioni del momento. È flessibilità fatta lampada: la gomma siliconica del suo corpo con il lungo filo che l'accompagna le permette di avvicinarci ovunque, insinuandosi morbida nello spazio tra le cose, producendosi in ludiche circonvoluzioni, ma anche in verticali compostezze. Comunque sia, Uto disegna forme nello spazio con duttilità, declinando gioco e misura insieme.

*With Uto, light becomes play: a game of ubiquity, mobile, movable, colourful, soft and always adaptable to the variations of the moment. It is flexibility in the form of a lamp: the silicone rubber of its body with the long wire that accompanies it lets the lamp go anywhere, softly winding its way between things, playfully twisting, yet always with the proper vertical composure. In any case, Uto draws ductile forms in space, combining playfulness and a sense of measure.*



Uto

Club  
*Barcelona, Spain*

Restaurant →  
*Venice, Italy*



Ambienti

153



Uto



Restaurant  
Stockholm, Sweden



← Retail  
Luzern, Switzerland

Retail  
Barcelona, Spain







Private house  
*Udine, Italy*

Private house →  
*Udine, Italy*



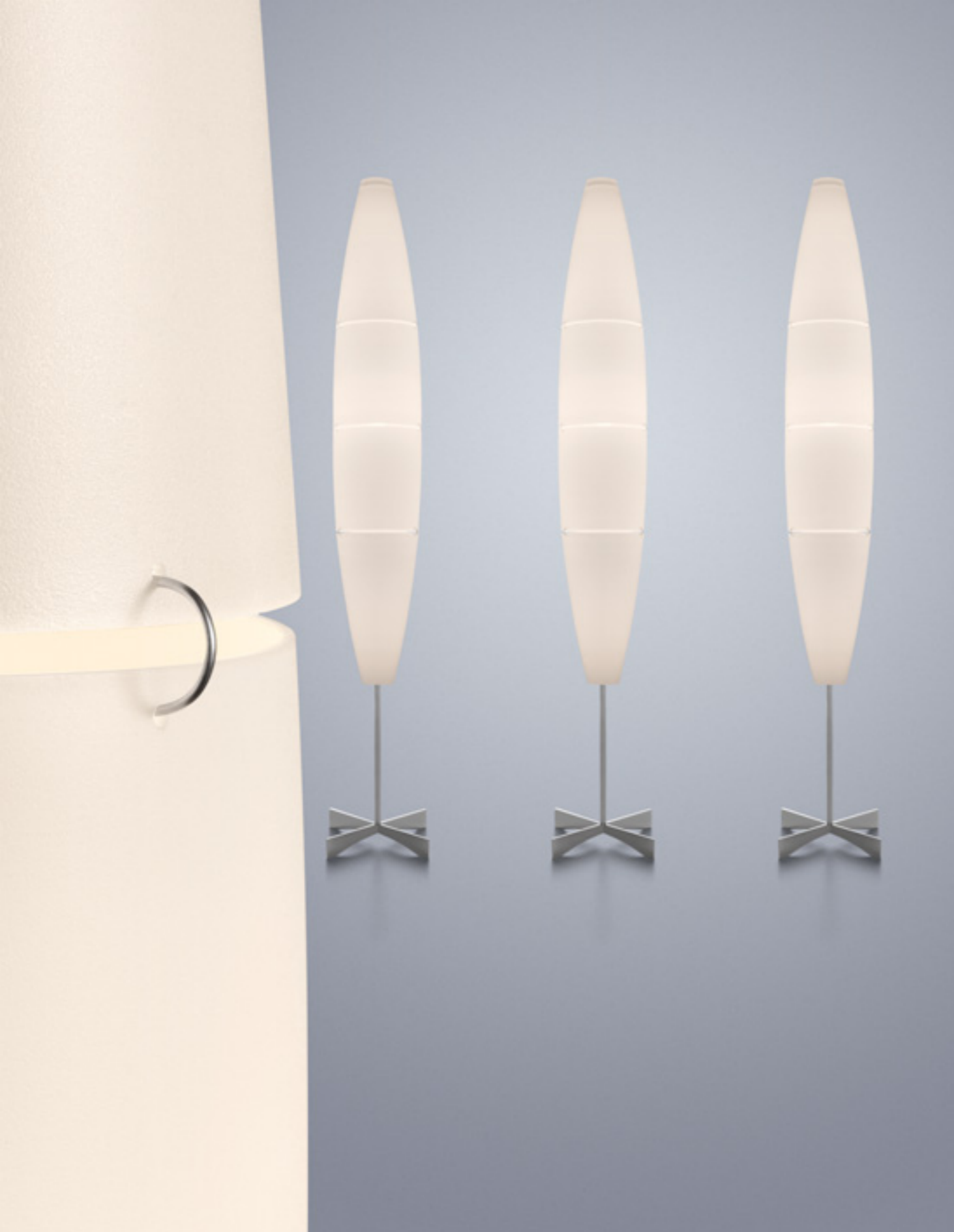
Lampada da terra e sospensione — *Floor and suspension lamp*

## Havana

Joseph Forakis, 1993/2005

Un corpo affusolato che emana una luce calda e diffusa, un involucro elegante di polietilene satinato che non s'inserisce solo nello spazio, ma lo crea: ne definisce i contorni, identifica le aree, segna i percorsi con freschezza disciplinata, a terra presidia l'ambiente con sicurezza e sospeso nell'aria viaggia leggero come un aerostato. Una forma evocativa che sa dare del tu all'architettura, anche quella del MoMA di New York, dove fa parte della collezione permanente di design.

*A tapered body that emits warm, diffuse lighting. An elegant satin-finish polyethylene wrapper that does not just insert itself in space, but creates it: defining its contours, identifying areas, marking paths with rigorous freshness. On the floor, it presides over the environment with confidence. Suspended in the air, it floats lightly, like an airship. An evocative form on a first-name basis with architecture, even that of the MoMA in New York, where it is part of the permanent design collection.*







Bar  
Venice, Italy



← Restaurant  
*Venice, Italy*

Office  
*Antwerp, Belgium*





Private house  
NY, USA

Private house →  
Frankfurt, Germany





## Spokes

Una ruota di bicicletta è il suo ready-made “rettificato”, i suoi raggi ricurvi in tondino metallico formano un volume leggero che vela appena lo spazio, e ne preserva la continuità con diafane sovrapposizioni. Spokes è una presenza eterea che regala efflorescenze di luce. Ma anche di ombre, grazie ai due LED che custodisce come una voliera: uno, infatti, è rivolto verso il basso per una funzionale luce diretta; l’altro proietta decori volatili, e anima l’ambiente come una lanterna magica.

*A bicycle wheel and its “rectified” ready-made. The curved spokes in metal rod form a light volume that barely veils space, preserving its continuity with diaphanous overlays. Spokes is an ethereal presence that brings efflorescence of light. But also shadow, thanks to the two LEDs it protects, as in a birdcage: one points downward for functional direct lighting; the other casts airborne decorative patterns, bringing space alive like a magic lantern.*

Spokes

Retail  
Seoul, Korea

Installation →  
Köln, Germany



Ambienti

173









← Retail  
*Milan, Italy*

Installation  
*Koln, Germany*



Spokes

Hotel  
New York, USA

Hotel →  
New York, USA



Ambienti





## Rituals

Applicare fattori culturali composti a un progetto industriale porta sempre qualcosa di nuovo, e Rituals fa parte del nuovo così inteso: ispirata alle tradizionali lanterne orientali, ne interpreta le qualità sensoriali in un raffinato processo produttivo, ottenendo diffusori di vetro dalla texture speciale che emanano una luce di tattile ritualità. Una famiglia di figure diverse per forma, misure e disposizioni d'uso, ma aggregabili in singolarità multiformi, che diffondono calme e intime atmosfere.

*The application of composite cultural factors to an industrial project always leads to something new. And Rituals is part of that novelty: based on traditional oriental lanterns, it interprets their sensory qualities in a refined production process, obtaining glass diffusers with a special texture to emit a light of tactile ritual character. A family of figures differing in form, size and arrangement for use, ready for grouping in polymorphic individualities, to spread a calm, intimate atmosphere.*



← Retail  
Seoul, Korea

Hotel  
La Thuile, Italy



Rituals

Installation  
NY, USA

Private house →  
Milan, Italy



Ambienti





## Miscellaneous

Ogni lampada Foscarini nasce da un gesto d'autore, ed è portatrice di un preciso temperamento. Ne risulta un catalogo di oggetti dalla forte personalità, emancipati da un'unica matrice stilistica, ma capaci anche di dialogare tra loro apertamente senza perdere smalto. Per questo le lampade Foscarini si propongono come strumenti versatili e in grado di rispondere, sotto la libera regia del progettista, a idee e valori diversi dello spazio, ma sempre facendo di ogni ambiente un'emozione di luce.

*Every Foscarini lamp comes from the gesture of an author, conveying a precise temperament. The result is a catalogue of objects with strong personalities, freed from a single stylistic matrix, but capable of establishing an open dialogue with each other, losing none of their original verve. This makes Foscarini lamps versatile tools to achieve – under the free aegis of the designer – different ideas and values of space, always filling it with the emotion of light.*



Miscellaneous

O-Space

Restaurant  
*Berlin, Germany*

Solar outdoor

Installation →  
*Venice, Italy*



Ambienti





← Fields, Tress

Installation  
*Milan, Italy*

Supernova

Restaurant  
*Alba, Italy*





Tite, Behive

Restaurant  
*Flughafen Wien Schwechat, Austria*

Miscellaneous

Tropico

Museum  
*Frankfurt, Germany*

Chouchin →

Restaurant  
*Duesseldorf, Germany*



Ambienti





Fields

Office  
Saddle Brook, New Jersey, USA

Miscellaneous

Lumiere

Office  
*Padua, Italy*

Tuareg →

Installation  
*Venice, Italy*



Ambienti

201



Miscellaneous



203

← Tite

Chouchin

Hotel  
*Luzern, Switzerland*

Bar  
*Belgium*



Miscellaneous

Birdie

Hotel  
*La Thuile, Italy*

Chouchin →

Retail  
*Paris, France*



Ambienti







← Lumiere

Office  
*Sidney, Australia*

Tite

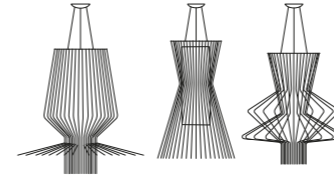
Restaurant  
*Cuneo, Italy*



Indice alfabetico — *Alphabetical index*

006 Allegro	069 Caboche ceiling	200 Lumiere
008	070	206
009	062 Caboche susp.	034 Le Soleil susp.
010	063	035
018	064	036
021	066	038
022	068	039
024	071	040
028	067 Caboche wall	042
030	197 Chouchin	043
031	203	
019 Allegretto	205 Chouchin reverse	190 O-Space
025	207	
027		130 Plass grande
028	192 Fields	132
029	198	133
098 Aplomb susp		140
100	090 Gregg floor	142
101	104	144
102	108 Gregg susp.	145
104	110	146
105	111	148
	116	143 Plass media
195 Behive table	117	149
074 Big Bang susp.	118	206
075	120	
076	123	182 Rituals susp.
077	124	183
078	125	184
080	122 Gregg wall	185
081	121 Gregg outdoor floor	187
082	119 Gregg outdoor susp.	186 Rituals XL susp.
204 Birdie wall - table		183 Rituals table
	167 Havana susp.	185
	168	
	169	191 Solar outdoor
	162 Havana outdoor floor	170 Spokes
	163	171
	164	172
	166 Havana outdoor susp.	173
		174
		175
		176
		177
		178
		179
		193 Supernova

**Allegro**  
Atelier Oï, 2007  
→ p. 006 - 031



**Allegro Assai**  
Ø 136 x h 136 cm  
Ø 53 1/2" x h 53 1/2"

**Allegro Vivace**  
Ø 64 x h 98 cm  
Ø 25 3/16" x h 38 9/16"

**Allegro Ritmico**  
Ø 75 x h 81 cm  
Ø 29 1/2" x h 12 3/8" 7/8"

Alluminio verniciato  
e metallo cromato.  
*Varnished aluminium  
and metal.*

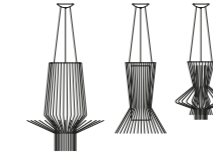
LED 220/240V: 63W 3000°K  
5000 lm  
LED 120V: 51W 3000°K  
4266 lm  
LED included and dimmable  
*Energy class A+*

220/240V: halo 1x100W E27  
+ halo 1x230W R7s  
120V: halo 1x75W E26  
+ halo 1x200W RSC  
*Energy class C*

IP 20

(halo)

**Allegretto**  
Atelier Oï, 2009  
→ p. 008, 010 - 011, 020,  
025, 026 - 027, 028



**Allegretto Assai**  
Ø 76 x h 87 cm  
Ø 29 7/8" x h 34 3/32"

**Allegretto Vivace**  
Ø 50 x h 70 cm  
Ø 19 7/8" x h 27 13/32"

**Allegretto Ritmico**  
Ø 51 x h 58 cm  
Ø 20 1/8" x h 22 11/16"

Alluminio verniciato  
e metallo cromato.  
*Varnished aluminium  
and metal.*

220/240V: LED retrofit/fluo  
2x12W E27, halo 2x100W E27  
120V: LED retrofit/fluo  
2x12W E26, halo 2x75W E26  
*Energy class A, C*

IP 20

**Le Soleil**  
Vicente Garcia  
Jimenez, 2009  
→ p. 032 - 043



Ø 62 x h 43 cm  
Ø 24 7/32" x h 17"

Polycarbonato stampato  
ad iniezione e metallo  
verniciato.  
*Injection moulded  
polycarbonate and coated  
metal.*

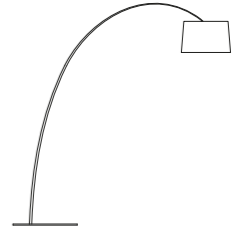
220/240V: halo 3x60W G9  
+ halo 1x75W GU10,  
fluo 1x42W GX24q-4  
120V: halo 3x75W G9  
+ halo 1x75W GU10,

fluo 1x42W GX24q-4  
*Energy class A+, A, C*

IP 20

(halo)

**Twiggy**  
Marc Sadler, 2006  
→ p. 044 - 059



l 170 / 200 x h 195/280 cm  
l 67" / 79" x h 85" / 110"

Materiale composito  
su base di fibra  
di vetro laccato, PMMA,  
polycarbonato, metallo  
verniciato e alluminio (LED).  
*Coated fibreglassbased  
composite material, PMMA,  
polycarbonate, varnished  
metal and aluminium (LED).*

LED 220/240V/120V: 33W  
3000° K 2920 lm included  
*Energy class A+*

220/240V: halo 3x77W E27  
120V: halo 3x100W E26  
*Energy class C*

Dimmer incluso  
*Dimmer included*

IP 20

(halo)

**Twiggy soffitto**  
Marc Sadler, 2007  
→ p. 050



Ø 46 x p 170/180 x h 29  
Ø 18 1/8" x d 67/71" h 11 7/16"

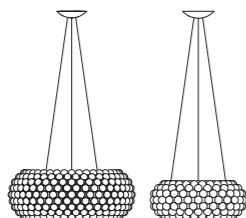
Materiale composito su base di fibra di vetro verniciato, policarbonato, PMMA e metallo verniciato.  
*Compound material on laquered glass fibre base, PMMA and laquered metal.*

220/240V: LED retrofit/fluvo 3x20W E27, halo 3x77W E27  
120V: LED retrofit/fluvo 3x20W E26  
halo 3x100W E26  
*Energy class A+, A, B, C*

Dimmer incluso  
*Dimmer included*



**Caboche sospensione**  
Patricia Urquiola con Eliana Gerotto, 2005  
→ p. 060 - 071



**Caboche grande:**  
Ø 70 x h 28 cm  
Ø 29 1/2" x h 11"  
**Caboche media:**  
Ø 50 x h 20 cm  
Ø 19 3/4" x h 7 7/8"

Polimetilmetacrilato, vetro soffiato, metallo cromato e alluminio (LED).  
*PMMA, blown glass, chromed metal and aluminium (LED).*

**Caboche grande**  
220/240V:  
LED included and dimmable  
46W 3000°K 4330 lm  
120V:  
LED included and dimmable  
54W 3000°K, 5051 lm  
*Energy class A+*

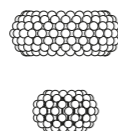
220/240V: halo 1x230W R7s  
120V: halo 1x200W RSC  
*Energy class C*

**Caboche media**  
LED included and dimmable  
35W 3000°K 3062 lm  
*Energy class A+*

220 / 240V: halo 1x160W R7s  
120V: halo 1x150W RSC  
*Energy class C*



**Caboche parete**  
Patricia Urquiola con Eliana Gerotto, 2006  
→ p. 063



**Caboche media**  
50 x h 24,5  
19 3/4" x h 7 3/5"  
**Caboche piccola**  
31 x h 18 cm  
12 1/5" x h 7 3/5"

Polimetilmetacrilato, vetro soffiato e metallo cromato.  
*PMMA, blown glass and chromed metal.*

220/240V: halo 1x120 R7s  
120V: halo 1x100W RSC  
*Energy class C*



**Caboche soffitto**  
Patricia Urquiola con Eliana Gerotto, 2006  
→ p. 069, 070



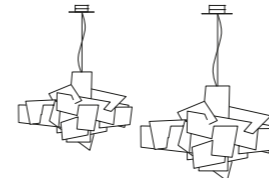
50 x h 19 cm  
19 3/4" x h 7 1/2"

Polimetilmetacrilato, vetro soffiato e metallo cromato.  
*PMMA, blown glass and chromed metal.*

220/240V: halo 1x120 R7s  
120V: halo 1x100W RSC  
*Energy class C*



**Big Bang**  
Enrico Franzolini con Vicente Garcia Jimenez, 2005  
→ p. 072 - 083



**Big Bang**  
l 96 x h 66 cm  
l 37 3/4" x h 23 2/3"  
**Big Bang XL**  
l 192 x h 132 cm  
l 75 1/6" x h 51 3/32"

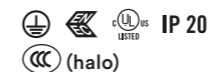
Metacrilato e alluminio verniciato.  
*Methacrylate and coated aluminium.*

**Big Bang**  
LED included and dimmable  
37,7 W 3000° K 3260 lm  
*Energy class A+*

220/240V: halo 1x160W R7c,  
fluvo 1x26W GX24q-3  
120V: halo 1x200W RSC,

fluvo 1x26W GX24q-3  
*Energy class A+, A, C*

**Big Bang XL**  
220/240V: halo 1x160W R7s  
120V: halo 1x200W RSC  
*Energy class C*



**Tress terra**  
Marc Sadler, 2008  
→ p. 094, 192



**Tress grande**  
l 25 x h 195 cm  
l 9 27/32" x h 76 25/32"

Materiale composito su base di fibra di vetro laccato, metallo verniciato e alluminio.  
*Compound material on lacquered fibre base, varnished metal and aluminium.*

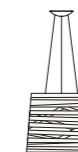
**Tress grande**  
220/240V:  
LED included  
56W 3000° K, 3721 lm  
120V: LED included  
46,4W 3000° K, 3193 lm  
*Energy class A+*

220/240V: halo 1x100W E27  
+ halo 1x230W R7s  
120V: halo 1x50W E26  
+ halo 1x200W RSC  
*Energy class C*

Dimmer incluso, doppia accensione — *Dimmer included, double switch*



**Tress grande**  
Marc Sadler, 2009  
→ p. 086, 088, 091, 092

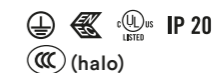


**Tress grande**  
Ø 48 x h 41 cm  
Ø 19 1/16" x h 15 15/16"

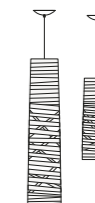
Materiale composito su base di fibra di vetro verniciato e metallo cromato.  
*Coated fibreglass-based composite material, chromed metal and aluminium.*

**Tress grande**  
LED included and dimmable  
35W 3000° K 3062 lm  
*Energy class A+*

220 / 240V: halo 1x160W R7s  
120V: halo 1x200W RSC  
*Energy class C*



**Tress media + piccola**  
Marc Sadler, 2009  
→ p. 087, 090, 091, 093, 095



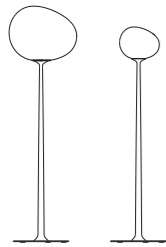
**Tress media**  
Ø 24 x h 110 cm  
Ø 9 7/16" x h 45 5/16"  
**Tress piccola**  
Ø 23 x h 61 cm  
Ø 9 7/32" x h 24 1/32"

Materiale composito su base di fibra di vetro verniciato e metallo cromato.  
*Coated fibreglass based composite material and chromed metal.*

**Tress media / piccola**  
220/240V: LED retrofit/fluvo 1x12W E27  
halo 1x100W E27  
120V: LED retrofit/fluvo 1x26W E26 + halo 1x75W E26  
*Energy class A+, A, B, C*



**Gregg terra**  
L+R Palomba, 2007  
→ p. 123



**Gregg grande**  
l 47 x p 40 x h 185 cm  
l 18 1/2" x d 15 3/4" x h 72 53/64"  
**Gregg media**  
l 31 x p 25 x h 168 cm  
l 12 3/16" x d 10 1/4" x h 66 1/2"

Vetro soffiato acidato e metallo verniciato.  
*Blown acid-etched glass and coated metal.*

220 / 240V: halo 1x205W E27  
120V: halo 1x150W E26  
*Energy class C*  
Dimmer incluso  
*Dimmer included*

IP 20

**Aplomb**  
Paolo Lucidi e Luca Pevere, 2010  
→ p. 096 -105



Ø 17 x h 40 cm  
Ø 6 1/2" x h 16"

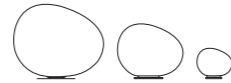
Cemento e alluminio.  
*Concrete and aluminium.*

220/240V: LED retrofit 1x8W halo 1x60W G9  
120V: LED retrofit 1x9W halo 1x60W G9  
*Energy class A+, A, C*

  IP 20  
 (GU10)



**Gregg tavolo**  
L+R Palomba, 2007  
→ p. 121



**Gregg grande**  
l 47 x p 40 x h 40 cm  
l 18 1/2" x d 15 3/4" x h 15 3/4"  
**Gregg media**  
l 31 x p 26 x h 26 cm  
l 12 3/16" x d 10 1/4" x h 10 1/4"  
**Gregg piccola**  
l 13 x p 11 x h 11 cm  
l 5 1/8" x d 4 5/16" x h 4 5/16"

Vetro soffiato acidato e metallo verniciato.  
*Blown acid-etched glass and coated metal.*

**Gregg grande**  
220 / 240V: LED retrofit/fluoro 1x25W E27, halo 1x205W E27  
120V: LED retrofit/fluoro 1x25W E26, halo 1x150W E26  
**Gregg media**  
220 / 240V: LED retrofit/fluoro 1x20W E27, halo 1x150W E27  
120V: LED retrofit/fluoro 1x20W E26, halo 1x100W E26  
**Gregg piccola**  
220 / 240V: halo 1x20W G9  
120V: halo 1x25W G9  
*Energy class A+, A, B, C*

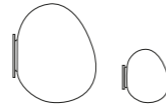
Dimmer incluso  
*Dimmer included*

IP 20

(grande / media)



**Gregg parete**  
L+R Palomba, 2007  
→ p. 122, 123



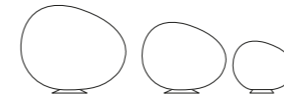
**Gregg media**  
27 x p 31 x h 26 cm  
10 5/8" x 10 1/4" x h 12 3/16"  
**Gregg piccola**  
12 x p 13 x h 11 cm  
4 3/4" x h 5 1/8" x h 4 5/16"

Vetro soffiato satinato e metallo verniciato.  
*Blown acid-etched glass and coated metal.*

**Gregg media**  
220/240V: LED retrofit/fluoro 1x25W E27, halo 1x150W E27  
120V: LED retrofit/fluoro 1x26W E26  
**Gregg piccola**  
220/240V: halo 1x20W E27  
120V: halo 1x25 G9

  IP 20

**Gregg outdoor terra**  
L+R Palomba, 2011  
→ p. 121



**Gregg XL**  
59 x p 51 x h 51 cm  
23 1/2" x d 20" x h 20"  
**Gregg grande**  
47 x p 40 x h 40 cm  
18 1/2" x 15 3/4" x h 15 3/4"  
**Gregg media**  
31 x p 27 x h 27 cm  
12 3/16" x d 10 1/2" x h 10 1/2"

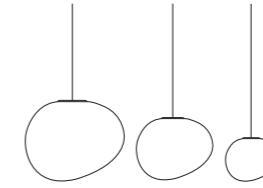
Polietilene stampato in rotazionale e metallo verniciato.  
*Rotational moulded polyethylene and coated metal.*

**Gregg XL - grande**  
220/240V: LED retrofit/fluoro 1x25W E27  
120V: LED retrofit/fluoro 1x26W E26  
**Gregg media**  
220/240V: LED retrofit/fluoro 1x15W E27  
120V: LED retrofit/fluoro 1x15W E26

IP 44 IP 65

Suitable for wet locations

**Gregg outdoor sospensione**  
L+R Palomba, 2011  
→ p. 119



**Gregg XL**  
53 x d 60 x h 50 cm  
23 7/16" x d 23 7/16" x h 19 3/4"  
**Gregg grande**  
41 x p 46 x h 39 cm  
18 5/16" x d 16 5/16" x h 15 7/16"  
**Gregg media**  
26 x p 31 x h 26 cm  
12 1/8" x d 10 5/16" x h 10 1/4"

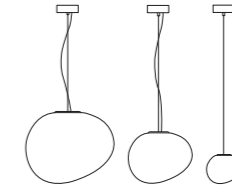
Polietilene stampato in rotazionale e metallo verniciato.  
*Rotational moulded polyethylene and coated metal.*

**Gregg XL - grande**  
220/240V: LED retrofit/fluoro 1x25W E27  
120V: LED Retrofit/fluoro 1x26W E26  
**Gregg media**  
220/240V: LED retrofit/fluoro 1x15W E27  
120V: LED retrofit/fluoro 1x15W E26

IP 44 IP 65

Suitable for wet locations

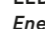
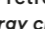
**Gregg sospensione**  
L+R Palomba, 2007  
→ p. 106 - 125



**Gregg grande**  
l 47 x p 40 x h 40 cm  
l 18 1/2" x d 15 7/8" x h 15 3/4"  
**Gregg media**  
l 31 x p 26 x h 26 cm  
l 12 3/8" x d 10 1/4" x h 10 1/4"  
**Gregg piccola**  
l 13 x p 11 x h 11 cm  
l 5 1/8" x d 4 5/16" x h 4 5/16"

Vetro soffiato acidato.  
*Blown acid-etched glass.*

**Gregg grande**  
220 / 240V: halo 1x205W E27  
LED retrofit/fluoro 1x30W E27  
120V: halo 1x150W E26  
LED retrofit/fluoro 1x36W E26  
*Energy class A+, A, B, C*  
**Gregg media**  
220 / 240V: halo 1x150W E27  
LED retrofit/fluoro 1x25W E27  
120V: halo 1x100W E26  
LED retrofit/fluoro 1x26W E26  
*Energy class A+, A, B, C*  
**Gregg piccola**  
220 / 240V: halo 1x33W G9  
120V: halo 1x40W G9  
*Energy class C*

  IP 20

LED retrofit

IP 20

(grande / media)



**Plass media**  
Luca Nichetto, 2015  
→ p. 144, 148



Ø 34 x h 50 cm  
Ø 13 1/4" x h 19 1/2"

Policarbonato stampato  
in rotazionale e acciaio.  
*Rotational moulded  
polycarbonate and steel.*

220/240V: LED retrofit/fluor  
1x20W E27 + 1x8W GU10  
halo 1x116W E27  
120V: LED retrofit/fluor  
1x26W E26 + 1x8W GU10  
halo 1x100W E26  
+ 1x50W GU10  
*Energy class A+, A, B, C*



**Uto**  
Lagranja Design, 2005  
→ p. 150 - 159



Ø 20 x h 64 cm  
Ø 7 7/8" x h 23 5/8"

Elastomero termoplastico  
e policarbonato.  
*Thermoplastic elastomer  
and polycarbonate.*

220/240V: LED retrofit/fluor  
1x15W E27  
120V: LED retrofit/fluor  
1x13W E26  
*Energy class A+, A*



*Suitable for damp locations*



**Lumiere**  
Rodolfo Dordoni, 1990  
→ p. 200, 206



Lumiere grande  
Ø 26 x h 45 cm  
Ø 10 1/4" x h 17 3/4"  
Lumiere piccola  
Ø 20 x h 35 cm  
Ø 7 7/8" x h 13 3/4"

Vetro soffiato e alluminio  
lucido verniciato.  
*Blown glass and polished  
or varnished aluminium.*

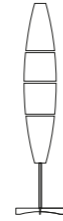
Lumiere grande  
220/240V: halo 2x48W G9  
120V: halo 2x40W G9  
Lumiere piccola  
220/240V: halo 1x40W G9  
120V: halo 1x40W G9



(piccola)



**Havana terra**  
Jozeph Forakis, 1993  
→ p. 160 - 169



Ø 23 x h 172 cm  
Ø 9 1/16" x h 66 7/8"

Polietilene stampato  
ad iniezione e metallo  
verniciato o cromato.  
*Injection moulded  
polyethylene and coated  
or chromed metal.*

220/240V: LED retrofit/fluor  
1x25W E27  
halo 1x116W E27  
120V: LED retrofit/fluor  
1x26W E26  
halo 1x150W E26  
*Energy class A+, A, B, C*



**Havana sospensione**  
Jozeph Forakis, 1993  
→ p. 167, 168, 169



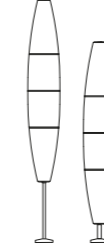
Ø 23 x h 130 cm  
Ø 9 1/16" x h 51 1/8"

Polietilene stampato  
ad iniezione e metallo  
verniciato.  
*Injection moulded  
polyethylene and coated  
metal.*

220/240V: LED retrofit/fluor  
1x25W E27  
halo 1x105W E27  
120V: LED retrofit/fluor  
1x26W E26  
inc 1x100W E26  
*Energy class A+, A, B, C*



**Havana outdoor terra**  
Jozeph Forakis, 2005  
→ p. 162, 163, 164 - 165



Ø 23 x h 170/143 cm  
Ø 9 1/16" x h 67" / 56 1/2"

Polietilene stampato  
in rotazionale e metallo  
verniciato.  
*Rotational moulded  
polyethylene and coated  
metal.*

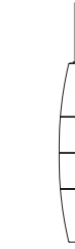
220/240V: halo 1x46W E27,  
LED retrofit/fluor 1x15W E27  
120V: LED retrofit/fluor  
1x13W E26  
inc 1x60W E26  
*Energy class A+, A, B, C*



*Suitable for wet locations*



**Havana outdoor sospensione**  
Jozeph Forakis, 2005  
→ p. 166



Ø 23 x h 130 cm  
Ø 9 1/16" x h 51 1/8"

Polietilene stampato  
in rotazionale e metallo  
verniciato.  
*Rotational moulded  
polyethylene and coated  
metal.*

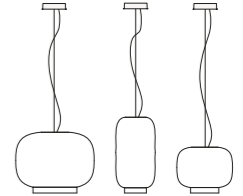
220/240V: halo 1x46W E27,  
fluor 1x15W E27  
120V: LED retrofit/fluor  
1x13W E26  
inc 1x60W E26  
*Energy class A+, A, B, C*



*Suitable for wet locations*



**Chouchin**  
Ionna Vautrin, 2011  
→ p. 197, 203, 205



Chouchin 1  
Ø 40 x h 31 cm  
Ø 15 7/8" x h 12 3/8"  
Chouchin 2  
Ø 22 x h 43 cm  
Ø 8 7/8" x h 17"  
Chouchin 3  
Ø 30 x h 25 cm  
Ø 12" x h 9 7/8"

Vetro soffiato verniciato.  
*Lacquered blown glass.*

Chouchin 1 - 2 - 3  
220/240V: LED retrofit/fluor  
1x25W E27  
halo 1x100W E27 PAR 30  
halo 1x150W E27  
120V: LED retrofit/fluor  
1x26W E26  
halo 1x75W E26 PAR 30  
halo 1x150W E26  
*Energy class A+, A, B, C*



**Behive**  
Werner Aisslinger, 2011  
→ p. 195



Ø 39,5 x h 40 cm  
Ø 15 1/2" x h 15 3/4"

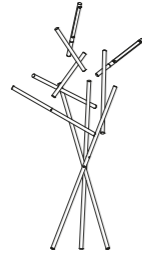
ABS masterizzato,  
policarbonato e  
metallo verniciato.  
*Batch-dyed ABS,  
polycarbonate  
and coated metal.*

220/240V: halo 1x150W E27  
120V: halo 1x150W E26  
*Energy class C*

Dimmer incluso  
*Dimmer included*



**Tuareg**  
Ferruccio Laviani, 2013  
→ p. 201



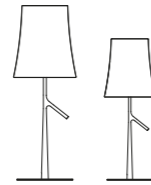
112 x p 78 x h 209 cm  
44 1/8" x 30 45/64" x h 82 9/32"

Alluminio verniciato  
e policarbonato.  
*Varnished aluminium  
and polycarbonate.*

220/240/120V:  
LED included and dimmable  
54W 3000°K, 4050 lm



**Birdie tavolo**  
L+R Palomba, 2012  
→ p. 204



Ø 25 x h 70 cm  
Ø 9 7/8" x h 11 1/2"  
Birdie piccola  
Ø 17 x 49 cm  
Ø 6 3/4" x h 19 1/4"

Policarbonato, acciaio e  
metallo verniciati.  
*Polycarbonate, varnished  
steel and metal.*

Birdie grande on-off  
220/240V: LED retrofit/fluo  
1x25W E27  
halo 1x150W E27  
120V: LED retrofit/fluo  
1x26W E26  
halo 1x150W E26  
Birdie grande touch dimmer  
220/240V: halo 1x150W E27  
120V: halo 1x150W E26  
*Energy class A+, A, B, C*  
Birdie piccola on/off  
220/240V: LED retrofit/fluo  
1x20W E27  
halo 1x70W E27  
120V: LED retrofit/fluo  
1x20W E26  
halo 1x70W E26  
Birdie piccola touch dimmer  
220/240V: halo 1x70W E27  
120V: halo 1x70W E26  
*Energy class A+, A, B, C*



**Birdie terra**  
L+R Palomba, 2011  
→ p. 204



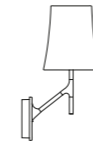
Ø 30 x h 150 cm  
Ø 11 3/4" x h 59"

Policarbonato, acciaio e  
metallo verniciati.  
*Polycarbonate, coated steel  
and metal.*

Birdie lettura on-off  
220/240V: LED retrofit/fluo  
1x25W E27  
halo 1x150W E27  
Birdie lettura touch dimmer  
220/240V: halo 1x150W E27  
120V: halo 1x150W E26  
*Energy class A+, A, B, C*



**Birdie parete**  
L+R Palomba, 2012  
→ p. 204



Ø 17 x p 24 x h 20 cm  
Ø 6 3/4" x 9 1/2" x h 16 3/4"

Policarbonato, acciaio  
e metallo verniciato.  
*Polycarbonate, coated steel  
and metal.*

220/240V: LED retrofit/fluo  
1x25W E27  
120V: LED retrofit/fluo  
1x20W E26  
halo 1x60W E26  
Birdie touch dimmer  
220/240V: halo 1x70W E27  
*Energy class A+, A, B, C*



**Spokes**  
Garcia Cumini, 2015  
→ p. 170 - 179



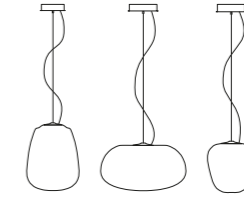
Spokes 1  
Ø 32,5 x h 71 cm  
Ø 12 3/4" x h 28"  
Spokes 2  
Ø 52 x h 52,5 cm  
Ø 20 1/2" x h 20 5/8"

Alluminio e acciaio verniciati.  
*Varnished steel and  
aluminium.*

LED included and dimmable  
38,5W 2700°K 2780 lm  
*Energy class A*



**Rituals sospensione**  
L+R Palomba, 2013  
→ p. 180 - 187



Rituals 1  
l 24 x h 34 cm  
l 9 5/8" x h 13 1/2"  
Rituals 2  
l 34 x h 19 cm  
l 13 3/8" x h 7 3/8"  
Rituals 3  
l 19 x h 21 cm  
l 7 1/2" x h 8 1/8"

Vetro soffiato satinato inciso  
e metallo verniciato.  
*Blown engraved satin glass  
and laquered metal.*

Rituals 1 - 2 - 3  
220/240V: LED retrofit/fluo  
1x15W E27, halo 1x70W E27,  
halo 1x60W G9  
120V: LED retrofit/fluo  
1x15 E26, halo 1x60W E26,  
halo 1x60W G9  
*Energy class A+, A, B, C*



(G9)



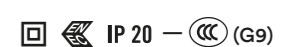
**Rituals tavolo**  
L+R Palomba, 2013  
→ p. 183, 184 - 185



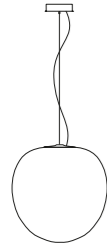
Rituals 1  
Ø 24 x H 40 cm  
Ø 9 1/2" x h 15 3/4"  
Rituals 2  
Ø 34 x h 25 cm  
Ø 13 1/4" x h 10"  
Rituals 3  
Ø 20 x h 27 cm  
Ø 8" x 10 1/2"

Vetro soffiato satinato inciso  
e metallo verniciato.  
*Blown engraved satin glass  
and coated metal.*

220/240V: LED retrofit/fluo  
1x15W E27,  
halo 1x105W E27,  
halo 1x60W G9 (con dimmer)  
120V: LED retrofit/fluo  
1x15W E26,  
halo 1x100W E26,  
halo 1x40W G9 (with dimmer)



**Rituals XL sospensione**  
L+R Palomba, 2015  
→ p. 186



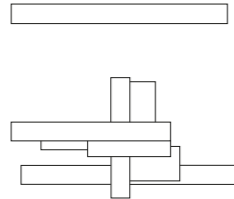
l 40 x h 41 cm  
l 15 15/16" x h 15 3/4"

Vetro soffiato satinato inciso e metallo verniciato.  
*Blown engraved satin glass and laquered metal.*

220/240V: LED retrofit/fluoro 1x25W E27, halo 1x150W E27  
120V: LED retrofit/fluoro 1x26 E26, halo 1x100W E26  
*Energy class A+, A, B, C*



**Fields**  
Vicente Garcia Jimenez, 2007  
→ p. 192, 198



**Fields 1**  
l 170 x p 9 x h 15 cm  
l 66 15/16" x d 3 1/2" x h 5 7/8"  
**Fields**  
l 178 x p 24 x h 95 cm  
l 70" x d 9 1/2" x h 37 3/8"

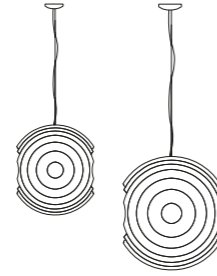
Metacrilato, alluminio verniciato e policarbonato.  
*Methacrylate, coated aluminium and polycarbonate.*

**Fields 1**  
220/240/120V: fluoro 1x80W G5  
*Energy class A+, A*  
**Fields**  
220/240/120V: fluoro 1x80W G5 + 1x54W G5 + 1x39W G5  
*Energy class A+, A*



**ADA** (Fields 1)

**Supernova**  
Ferruccio Laviani, 2000  
→ p. 193



**Supernova**  
Ø 50 x p 57 x h 60 cm  
Ø 19 3/4" x d 22 1/2" x h 23 3/4"

**Supernova XL**  
Ø 75 x p 86 x h 90 cm  
Ø 33 3/32" x d 33 3/32" x h 35 3/64"

Alluminio verniciato.  
*Lacquered aluminium.*

220/240V: LED retrofit/fluoro 1x23W E27,  
120V: LED retrofit/fluoro 1x20W E26, inc 1x100W E26  
*Energy class A+, A, B, C*



**O-Space**  
Luca Nichetto e Gianpietro Gai, 2003  
→ p. 190



l 56 x p 43 x h 29 cm  
l 22" x d 17" x h 11 3/8"

Poliuretano espanso e metallo cromato.  
*Expanded polyurethane and chrome metal.*

220/240V: halo 1x120W R7s  
120V: halo 1x150W RSC  
*Energy class C*



**Tropico**  
Giulio Iacchetti, 2008  
→ p. 196



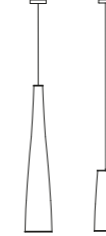
**Tropico Vertical**  
Ø 30 x h 144 cm  
Ø 11 5/6" x h 56 11/16"  
**Tropico Sphera**  
Ø 60 x h 56 cm  
Ø 23 3/4" x h 22"

Policarbonato stampato a iniezione e metallo cromato.  
*Injection moulded polycarbonate and chromed metal.*

**Tropico Vertical**  
220/240V: fluoro 1x40W 2G11  
120V: fluoro 1x36W 2G11  
*Energy class A+, A*  
**Tropico Sphera**  
220/240V/120V: fluoro 1x42W GX24q-4  
*Energy class A+, A*



**Tite**  
Marc Sadler, 2000  
→ p. 194, 202, 207



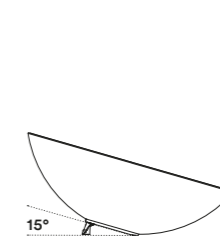
**Tite 1**  
Ø 21 x h 115 cm  
Ø 8 1/4" x h 45 1/4"  
**Tite 2**  
Ø 21 x h 55 cm  
Ø 8 1/4" x h 21 3/4"

Tessuto di vetro, fibra di carbonio e acciaio nichelato.  
*Fiber glass fabric with carbonium thread and nickel-plated steel.*

220/240V: halo 1x116W E27, LED retrofit/fluoro 1x25W E27  
120V: LED retrofit/fluoro 1x26W E26, inc 1x100W E26  
*Energy class A+, A, B, C*



**Solar outdoor**  
Jean Marie Massaud, 2011  
→ p. 191



Ø 80 x h 26/38 cm  
Ø 31 3/8" x h 10 1/4" - 14 3/4"

Polietilene stampato a rotazione, gres e metallo verniciato.  
*Rotational moulded polyethylene, porcelain stoneware top shelf.*

220/240V: LED retrofit/fluoro 1x25W E27  
120V: LED retrofit/fluoro 1x26W E26  
*Energy class A+, A*



*Suitable for wet locations*

Inclinabile fino a 15°.  
*Reclinable up to 15°.*



Appendice — Appendix  
A proposito dei luoghi — About the places

**Allegro + Allegretto**

*Taizu Restaurant,*  
Tel Aviv, Israel  
Design: Pitsou Kedem  
& Baranowitz - Amit  
Design Studio  
Design team architects:  
Pitsou Kedem, Hila Sela,  
Irene Goldberg, Sigal  
Baranowitz, Gali Amit  
Lighting design: Orly  
Avron Alkabas  
Photography: Amit Geron  
→ p. 008, 009, 013

*Maze Restaurant,*  
Melbourne, Australia  
Photography: Marcel Aucar  
Courtesy Space Furniture  
→ p. 018

*Pringle of Scotland Store,*  
Shanghai, China  
Interior design project  
by: Atelier Oi  
© Courtesy Pringle  
of Scotland  
→ p. 019

*Pinnacle Tower,*  
Amsterdam, NL  
Interior design: Tank  
Interior Design Amsterdam  
Lighting design: Studio Brink  
Photography: Teo Krijgsman  
Courtesy Brink Light  
→ p. 020

*Fairmont Pacific Rim Hotel,*  
Vancouver, Canada  
Photography: Heather Merenda  
Courtesy Lightform  
→ p. 021

*International Red Cross  
and Red Crescent Museum,*  
Genève, Switzerland  
Project: Atelier Oi  
Photography: © MICR  
photo Alain Germond  
→ p. 022, 023

*Le Bombarde Restaurant,*  
Venice, Arsenal, Italy  
Photography:  
Alessandro Paderni  
→ p. 024

*Talchà Shop,* São Paulo, Brazil  
Architecture: studio mk27  
- Marcio Kogan + Luciana  
Antunes + Diana Radomysler  
Photography: Rômulo Fialdini  
→ p. 025

*Hotel Intercontinental Davos,*  
Davos Dorf, Switzerland  
Project: Architect Oikios /  
Baulink  
Interior design: Living Design  
Detailed design: CM Design  
Lighting design: Licht01  
→ p. 026, 027

*Private house, Seaside Villa,*  
Izmir, Turkey  
Project and interior  
design: IM Lab  
Photography: IM Lab  
and See4real  
→ p. 028

*Hotel Hilton South Wharf,*  
Melbourne, Australia  
Project: Joint Venture  
Architects Woods Bagot  
and NH Architecture  
Photography: Trevor Mein  
Courtesy Space Furniture  
→ p. 029

*W Retreat & Spa,*  
Vieques Island, USA  
Project: Patricia Urquiola  
Photography: Ruy Teixeira  
→ p. 030

*Plantage cafe & restaurant,*  
Amsterdam, The Netherlands  
Project: Studio Linse  
Photography: Ewout Huibers  
Courtesy Mobilia  
→ p. 031

**Le Soleil**

*Food Shop Dinzler,*  
Ischenberg, Germany  
→ p. 034

*Q Music Restaurant,*  
Amsterdam, The Netherlands  
Photography: Product Margje  
→ p. 035

*Cesar installation at Salone  
del Mobile, Milan, Italy*  
Project: Garcia Cumini  
Courtesy Stand Cesar -  
Eurocucina 2014  
→ p. 036, 037

*Kokoro Restaurant,*  
Rovigo, Italy  
Project: Nicola Azzi Architect  
Photography: Fancy Grafica  
→ p. 038

*Art Restaurant, Arte Fiera*  
Art First, Bologna, Italy  
Photography: Immaginopoli  
→ p. 039

*Hotel Holiday Inn Paris*  
Gare de l'Est, Paris, France  
Project: entirely redesigned  
by Axel Schoenert  
Architectes and  
Zsofia Varnagy  
Photography: © Luc Boegly  
Courtesy AS architects  
→ p. 040, 041

*Installation, Florence, Italy*  
Courtesy Marini Pandolfi  
→ p. 042

*Installation, CDW,*  
London, UK  
Photography: Philip Vile  
→ p. 043

**Twiggy**

*Ipês House,*  
São Paulo, Brazil  
Architect: studio mk27 -  
Marcio Kogan + Lair Reis  
Interiors: Diana Radomysler  
Photography: FG+SG,  
Fernando Guerra,  
Sergio Guerra  
→ p. 046, 047

*Lounge, Bookshop*  
at *Arsenale, Venice, Italy*  
Photography:  
Alessandro Paderni  
→ p. 048

*Hotel Adagio, Moscow, Russia*  
Project: On/Off Systems  
→ p. 049

*A W Experience showroom,*  
São Paulo, Brazil  
Courtesy Lumini  
→ p. 050, 051

*Hotel Mandarin Oriental,*  
Barcelona, Spain  
Interior design project:  
Patricia Urquiola  
→ p. 052

*The Pavilion, Downtown*  
Dubai, Dubai, UAE  
Project: Studio M, Interior  
Architecture by  
Abboud Malak  
Photography: Maha Nasra  
Edde, 8th Street Studios  
→ p. 053

*Al Khan Resort, Sharjah, UAE*  
Project: Studio M, Interior  
Architecture by  
Abboud Malak  
Photography: Maha Nasra  
Edde, 8th Street Studios  
→ p. 054, 055

*Gran Hotel Havana,*  
Barcelona, Spain  
Project: Beatriz Cosials -  
Taller de Interiorismo  
Lighting design dealer:  
Lumen's Boulevard  
Photography: Meritxell  
Arjalaguer  
→ p. 056

*CBC HQ, Guatemala*  
Architectural project: Carol  
De Saravia - Alfredo Saravia  
Interior design project: Carol  
De Saravia - Alfredo Saravia,  
Alex Titus, Cristina Erazo  
and Crista Saravia  
Photography: Andres Asturias  
→ p. 057

*BDO e CTAC HQ,*  
's Hertogenbosch, NL  
Project: M+R interior  
architecture  
Photography:  
Studio de Winter  
→ p. 058, 059

**Caboche**

*Restaurant Jumeirah at*  
*Etihad Towers Rosewater,*  
Abu Dhabi, UAE  
Photography: Jumeirah  
International LLC  
→ p. 062

*Hôtel La Monnaie Art & Spa,*  
La Rochelle, France  
Project: Atelier Solo -  
Philippe Lucazeau,  
Nantes, France  
→ p. 063

*Tea Room, Paris, France*  
→ p. 064, 065

*Motel One, Lounge area,*  
Dresden, Germany  
→ p. 066

*Hotel Mandarin Oriental,*  
Barcelona, Spain  
Interior design project:  
Patricia Urquiola  
→ p. 067

*Garibaldi Italian Restaurant*  
and Bar, Singapore  
→ p. 068

*The Park Hotel,*  
Bangalore, India  
Architectural project:  
Conran & Partners  
Photography: Amit Pasricha  
and Bharat Sikka  
→ p. 069

*Hipotels Barrosa Palace*  
& Spa, Cádiz, Spain  
Architectural project:  
Antonio Fernandez  
Interior design project:  
Guillermo Comte  
Courtesy Hipotels  
→ p. 070

*Curved House, Springfield,*  
Missouri, USA  
Project by Hufft Projects  
Photography: Mike Sinclair  
→ p. 071

**Big Bang**

*CBC HQ, Guatemala*  
Architectural project: Carol  
De Saravia - Alfredo Saravia  
Interior design project: Carol  
De Saravia - Alfredo Saravia,  
Alex Titus, Cristina Erazo  
and Crista Saravia  
Photography: Andres Asturias  
→ p. 074

*House, Laguna Beach,*  
California, USA  
Architect: Horst Architects  
Interior design: Aria  
Design Inc  
→ p. 075

*HP Norge office,*  
Oslo, Norway  
Photography:  
Gatis Rozenfelds  
Courtesy Scenario  
Interiorarkitekter  
→ p. 076

*Big Bang Evolution*  
Installation, Biennale  
Bookshop at *Arsenale,*  
Venice, Italy  
Photography:  
Alessandro Paderni  
→ p. 077

*Megion group,*  
Business Center *Galleon,*  
Voronezh, Russia  
Project: Aleksandra Soboleva  
Photography: Aleksandra  
Soboleva  
→ p. 078, 079  
*Butterfly House,*  
San Francisco, USA  
Interior design:  
Feldman Architecture  
Lighting design: Kim Cladas  
Lighting Design  
Photography: Joe Fletcher  
→ p. 080

*Serli store, Trieste, Italy*  
Photography: Marco Covi  
→ p. 081

*Hotel Hipotels Said,*  
Mallorca, Spain  
Project and interior design:  
Juan Morro  
Courtesy Hipotels  
→ p. 082, 083

**Tress**

*Restaurant Eisfeld,*  
Luzern, Switzerland  
→ p. 086

*A House, Sofia, Bulgaria*  
Project: LP Group  
→ p. 087

*Rabobank Office,*  
The Netherlands  
→ p. 088, 089

*Restaurant Le Notre Paris,*  
Amman, Jordan  
Photography: Exclusive  
Homes  
→ p. 090

*Restaurant Hotel Igeretxe,*  
Getxo, Spain  
Project: Susaeta  
Courtesy Susaeta  
→ p. 091

*Restaurant Le Notre Paris,*  
Amman, Jordan  
Photography: Exclusive  
Homes  
→ p. 092

*Office Lobby Park 80 West,*  
Saddle Brook,  
New Jersey, USA  
Project: Gensler  
Photography: Park 80 West  
- L&L Holdings photography,  
© Gensler  
→ p. 093

*Restaurant Eisfeld,*  
Luzern, Switzerland  
→ p. 094

*Shaw Centre Singapore*  
Project: DPA Architects  
→ p. 095



Appendice — Appendix  
A proposito dei luoghi — About the places

## Aplomb

*Gaijin Restaurant,*  
*Helsinki, Finland*  
Architect: Futudesign Oy  
→ p. 098, 099

*Bar Decumanus Cafè,*  
*Florence, Italy*

Project and interior design:  
Mimesi62 Architetti Associati  
Courtesy Comet/Marini  
Pandolfi Firenze  
Photography: Arch.  
L. Liverani - Arch. S. Testi  
→ p. 100

*Probka Restaurant,*  
*Moscow, Russia*  
Interior design: Albina  
Nazimova  
→ p. 101

*Pier Zero bar,*  
*Helsinki airport, Finland*  
Project: Detail Design GmbH  
Interior design: Roger James  
Copeland, owner of Detail  
Design GmbH  
→ p. 102, 103

*Bar Decumanus Cafè,*  
*Florence, Italy*  
Project and interior design:  
Mimesi62 Architetti Associati  
Courtesy Comet/Marini  
Pandolfi Firenze  
Photography: Arch. L.  
Liverani - Arch. S. Testi  
→ p. 104

*P House, São Paulo, Brazil*  
Architect: studio mk27 -  
Marcio Kogan + Lair Reis  
Interiors: Diana Radomysler  
Photography: FG+SG,  
Fernando Guerra,  
Sergio Guerra  
→ p. 105

## Gregg

*Poldi Pezzoli Museum,*  
*Terrazza Pollaiuolo,*  
*Caffetteria, Milan, Italy*  
Project: Luca Rolla e Alberto  
Bertini architects  
Project team: Anna Fuselli  
Photography: Luca Rolla  
e Alberto Bertini (interiors),  
Gianmarco Corradi (outdoor)  
→ p. 108, 109, 110, 111, 112,  
113, 114, 115

*Mr.Wash, Düsseldorf Germany*  
Project: d.sign Werbeagentur,  
Mülheim/Ruhr  
→ p. 116

*Loft, Chelsea NY, USA*  
Project: Thomas R Devanney  
Architect LLC  
Interior design: Lisa Kohler  
Photography: Chris Cooper  
→ p. 117

*Le Bombarde Restaurant,*  
*Arsenale, Venice, Italy*  
Photography:  
Alessandro Paderni  
→ p. 119

*Entrance hall Holman Fenwick*  
*Willan, London City, UK*  
Project: TP Bennett  
Courtesy: Chelsea Lighting  
→ p. 118, 120

*Showroom, A Coruña, Spain*  
Courtesy Halo Iluminación  
→ p. 121

*Stairwell, Hotel Ohla,*  
*Barcelona, Spain*  
Courtesy: Halo Iluminación  
→ p. 122

*Hotel Le Val Thorens,*  
*Val Thorens, France*  
Project: agence d'architecture  
d'intérieur ID. Associés  
→ p. 123

*Groupe Ortec HQ,*  
*Marseille, France*  
Project: Virginie Romeo  
& Stéphane Long  
Courtesy PBA  
→ p. 124

*Office Matmut Assurances,*  
*Rouen, France*  
Project: Artefact Architecte  
Courtesy Eclipse Diffusion  
→ p. 125

*Minotti Showroom,*  
*Shanghai, China*  
Photography: Suisicong  
→ p. 126, 127

## Plass

*Topolopompo Restaurant,*  
*Tel Aviv, Israel*  
Architects: Baranowitz  
Kronenberg Architecture Ltd  
Photography: Amit Geron  
→ p. 130, 131, 132, 133, 134,  
135, 136, 137, 138, 139

*Installation, Milan, Italy*  
Photography: Enrico Rizzato  
→ p. 140, 141

*Installation, London, UK*  
Photography: Philip Vile  
→ p. 142

*Hotel Christopher's, London, UK*  
Project by: De Matos Ryan  
Photography: Hufton + Crow  
→ p. 143

*Private house,*  
*Duesseldorf, Germany*  
Project by:  
Anderswohneninderstadt.de  
zentralbau GmbH  
Lighting design: Horst /  
Düsseldorf  
→ p. 144

*Installation, Biennale Bookshop,*  
*Arsenale, Venice, Italy*  
Photography:  
Alessandro Paderni  
→ p. 145

*Delta Hotel & Resort, Toronto,*  
*Canada*  
Project by: Champalimaud  
Photography: Evan Dion  
→ p. 145, 147

*Hotel Okko, Nantes, France*  
Project by: Patrick Norguet  
Photography: Jerrome Galland  
Courtesy: The Great  
Hospitality  
→ p. 148

*Showroom, Seoul, Korea*  
Courtesy: Barunson  
→ p. 149

## Uto

*Sutton Club, Barcelona, Spain*  
→ p. 152

*Restaurant Le Bombarde,*  
*Arsenale, Venice, Italy*  
Photography:  
Alessandro Paderni  
→ p. 153

*Restaurant F12, Stockholm,*  
*Sweden*  
→ p. 154, 155

*Showroom MVM,*  
*Luzern, Switzerland*  
Courtesy: Sphinx Lichttechnik  
→ p. 156

*Ottica Ximenes,*  
*Barcelona, Spain*  
Project by: Xavier Martin  
Photography: Jordi Miralles  
→ p. 157

*Private house, Udine, Italy*  
Photography:  
Alessandro Paderni  
→ p. 158

*Private house garden,*  
*Udine, Italy*  
Photography:  
Alessandro Paderni  
→ p. 159

## Havana

*Outdoor installation, La*  
*Biennale, Arsenale, Venice, Italy*  
Photography:  
Alessandro Paderni  
→ p. 162, 163

*Bar, La Biennale,*  
*Arsenale, Venice, Italy*  
Photography:  
Alessandro Paderni  
→ p. 164, 165

*Restaurant Le Bombarde,*  
*Arsenale, Venice, Italy*  
Photography:  
Alessandro Paderni  
→ p. 166

*Business building outdoor,*  
*Antwerp, Belgium*  
→ p. 167

*Private house stairwell,*  
*New York, USA*  
→ p. 168

*Transformation of*  
*an apartment in Frankfurt,*  
*Germany*  
Architect: Georg Riesenhuber  
Photography: Martin Starl  
→ p. 169

## Spokes

*Showroom, Seoul, Korea*  
Courtesy: Barunson  
→ p. 172

*Installation, Koln, Germany*  
Courtesy: FREIFRAU  
→ p. 173

*A Riccione Bistrot, Milan, Italy*  
Project by: Studio FRI,  
Francesca Poletti, Francesca  
Volterra Interior designer  
→ p. 174, 175

*Cesar - Flagship Store,*  
*Milan, Italy*  
Project by:  
Garcia Cumini Associati  
Photography: Andrea Ferrari  
→ p. 176

*Installation, Koln, Germany*  
Courtesy: FREIFRAU  
→ p. 177

*Hotel Inside New York*  
*NoMad, NY, USA*  
Project and interior design  
by: Peter Poon Architects  
→ p. 181

## Rituals

*Showroom, Seoul, Korea*  
Courtesy: Barunson  
→ p. 182

*Hotel Nira Montana,*  
*La Thuile, Italy*  
Project by: Studio del Portico  
→ p. 183

*Offecct Showroom,*  
*Stockholm, Sweden*  
Photography: Patrik Engquist  
→ p. 184, 185

*Installation, The Armory*  
*Show, New York, USA*  
Photography: Teddy Wolff  
→ p. 186

*Private house, Milan, Italy*  
Photography:  
Alessandro Paderni  
→ p. 187

## Miscellaneous

*Restaurant, Berlin, Germany*  
→ p. 190

*Outdoor installation,*  
*La Biennale, Giardini,*  
*Venice, Italy*  
Photography:  
Alessandro Paderni  
→ p. 191

*Installation, Milan, Italy*  
→ p. 192

*Restaurant Cascina Langa,*  
*Alba, Italy*  
Project by: Davide Salvatico  
Architect  
Photography: Carlo Carossio  
→ p. 193

*Restaurant Don Café,*  
*Flughafen Wien Schwechat,*  
*Austria*  
Project by: BEHF  
Corporate Architects  
→ p. 194, 195

*Installation at Museum fur*  
*Angewandte Kunst, Frankfurt,*  
*Germany*  
→ p. 196

*Four Seasons Restaurant,*  
*Duesseldorf, Germany*  
Interior project by: Ralf Breuer  
Courtesy: Citizenoffice  
→ p. 197

*Office Lobby Park 80 West,*  
*Saddle Brook, New Jersey, USA*  
Project by: Gensler  
Photography: Park 80 West -  
L&L Holdings photography,  
©Gensler  
→ p. 198, 199

*Uni Flair Spa office, reception,*  
*Padua, Italy*  
→ p. 200

*Installation, Biennale*  
*Bookshop, Arsenale, Venice,*  
*Italy*  
Photography:  
Alessandro Paderni  
→ p. 201

*Hotel Hermitage, Luzern,*  
*Switzerland*  
Photography: Erika Peyer  
→ p. 202

*Italian Bar La Farfalla, Belgium*  
Concept by: 1000Lux.be  
→ p. 203

*Hotel Nira Montana,*  
*La Thuile, Italy*  
Project by: Studio del Portico  
→ p. 204

*Carroll Store, Paris, France*  
Copyright: Didier Delmas  
→ p. 205

*Conference room,*  
*Sidney, Australia*  
→ p. 206

*Da Guido Restaurant, Agenzia*  
*di Pollenzo, Cuneo, Italy*  
→ p. 207

## Legenda — Key

LED

Identifica i modelli con LED integrati e già inclusi, risultato della progettazione ed ingegnerizzazione Foscarini.

*It marks the models with integrated LED included in the lamp, which is the result of Foscarini designing and engineering.*

LED Retrofit

Identifica la possibilità di utilizzare una lampadina LED retrofit standard comunemente disponibile sul mercato.

*It marks the possibility of using a standard retrofit LED bulb available on the market.*

CSQ - IQNET

Marchio valido in tutto il mondo, certifica che l'azienda Foscarini attua un sistema di gestione della qualità conforme alla normativa UNI EN ISO 9001:2008, per garantire un elevato standard qualitativo nella progettazione, sviluppo, fabbricazione e commercializzazione dei propri prodotti.

*The CSQ-IQNET label is valid all over the world. It certifies that Foscarini runs a quality management system which complies with the UNI EN ISO 9001:2008 standard, to guarantee a high quality level for what concerns project, development, production and distribution of its products.*

CSQ ECO

Marchio valido in tutto il mondo, certifica che l'azienda Foscarini attua un sistema di gestione ambientale conforme alla normativa UNI-EN ISO 14001:2004 per garantire l'impegno dell'azienda ad operare nel rispetto dell'ambiente e con l'obiettivo continuo di ridurre l'impatto delle proprie attività.

*This label is valid all over the world. It certifies that Foscarini runs an environmental management system which complies with the UNI EN ISO 14001:2004 standard in order to guarantee company's commitment to continual improvement of its environmental performances.*

ENEC 15

Il marchio ENEC (Certificazione Elettrica relativa alle Norme Europee) è un marchio volontario rilasciato da enti terzi. Certifica che il prodotto è conforme e rispetta i requisiti proposti dalla norma EN 60598 ed è progettato e realizzato in aziende il cui sistema di gestione della qualità soddisfa i requisiti della norma UNI EN ISO 9001.

*The label ENEC (Electrical Certification concerning European Standard) is a voluntary label granted by third organizations. It certifies that a product complies with the EN 60598 standards and has been designed and manufactured by companies with an approved UNI EN ISO 9000 quality control system.*

Classe I

Apparecchio in classe I°: è obbligatoria la connessione al conduttore di protezione giallo/verde (messa a terra).

*Class I° luminaire: it's necessary to connect the device to the yellow/green protective conductor (earthing).*

cULus

Certifica che il prodotto è conforme e rispetta i requisiti proposti dalle normative nordamericane, viene rilasciato dall'UL, organizzazione indipendente leader nel settore della certificazione di sicurezza dei prodotti destinati al mercato Nordamericano.

*Certifies that the product is conform to the North American standards, and is issued by UL, independent organisation leader in the field of products safety certification for the North American market.*

## Legenda — Key

Classe II

Apparecchio in cui la protezione contro la scossa elettrica si basa unicamente sul doppio isolamento e/o isolamento rinforzato in ogni parte e senza dispositivo di messa a terra.

*Light fittings whose safety is guaranteed only by the double and/or reinforced insulation of all parts, with no earth.*

*Appareil où la sécurité électrique est garantie par un double niveau d'isolation de toutes les parties sans dispositif de mise à la terre.*

*Bei Leuchten der Klasse II ist der Berührungsschutz durch eine doppelte und /oder verstärkte Schutzisolierung aller spannungführenden Teile gegeben, ohne Erdung.*

*Aparatos con protección contra descargas eléctricas basados en un doble aislamiento o un aislamiento reforzado, sin dispositivo de toma de tierra.*

CCC

The China Compulsory Certificate mark certifies that the product is conform to the Chinese standards.

*The China Compulsory Certificate mark certifies that the product is conform to the Chinese standards.*

*The China Compulsory Certificate mark certifies that the product is conform to the Chinese standards.*

*The China Compulsory Certificate mark certifies that the product is conform to the Chinese standards.*

*The China Compulsory Certificate mark certifies that the product is conform to the Chinese standards.*

Americans Disability ACT

Serie di normative che regolano l'arredo di edifici pubblici a favore dei portatori di handicap.

*Certification that confirms accessibility to places of public accommodation and commercial facilities by individuals with disabilities.*

*Une série de normes concernant la décoration des collectivités en faveur des handicapés.*

*Eine Reihe von Vorschriften für öffentliche Gebäude zugunsten der Behinderten.*

*La Ley de Estadounidenses con Discapacidades incluye una serie de normas que regulan la decoración de los edificios públicos a favor de los minusválidos.*

IP Protection Degree

IP20: apparecchio protetto contro la penetrazione di corpi solidi di dimensioni maggiori a 12 mm e non protetto nei confronti dei liquidi.

IP44: apparecchio protetto contro la penetrazione di corpi solidi di dimensioni maggiori a 1 mm e protetto contro gli spruzzi d'acqua.

IP65: apparecchio totalmente protetto contro la polvere e protetto contro i getti d'acqua.

*IP20: protected against the penetration of solid objects greater than 12 mm and non protected against liquids.*

*IP44: protected against the penetration of solid objects greater than 1 mm and protected against splashing water.*

*IP65: dust-tight and protected against water jets.*

Energy Efficiency Classes

Le classi di efficienza energetica degli apparecchi luminosi, definite dal reg. UE n.874/2012, sono determinate in base all'Indice di Efficienza Energetica (IEE) e spaziano in un intervallo compreso tra A++ (efficienza massima) ed E (efficienza minima).

*The energy efficiency classes for light appliances set out by EU regulation no. 874/2012 are calculated on the basis of the Energy Efficiency Index (EEI) and range between A++ (maximum efficiency) and E (minimum efficiency).*

## Colophon

Foscarini SpA  
via delle Industrie 27  
30020 Marcon / Venezia / Italy  
T +39 041 595 3811  
F +39 041 595 3820  
foscarini@foscarini.com

Foscarini Inc  
17 Greene Street, New York  
NY /10013 / USA  
T +1 212 247 2218  
F +1 646 545 2564  
foscarini.inc@foscarini.com

Foscarini Spazio Brera  
via Fiori Chiari 28 /  
via Pontaccio 19  
20121 / Milano / Italy  
T +39 02 870 71320  
spaziobrera@foscarini.com

Foscarini Spazio Soho  
17 Greene Street, New York  
NY /10013 / USA  
T +1 212 257 4412  
spaziosoho@foscarini.com

Azienda certificata  
UNI EN ISO 9001  
UNI EN ISO 14001

edizione 04.2016

Concept and graphic design:  
Designwork  
art direction: Artemio Croatto  
art work: Erika Pittis / Designwork

Photo post-production:  
Massimo Gardone / Azimut

Texts:  
Michele Calzavara

colour separation:  
Luce, Udine  
made and printed in Italy  
by OGM, Padova

[foscarini.com](http://foscarini.com)

**FOSCARINI**